

RNCM-251, 301, 401

SPACE SAVING • POWERFUL HYDRAULIC CLAMPING

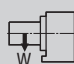
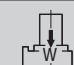
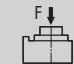


The RNCM-Series rotary tables utilize a space saving vertical motor mounting configuration. These tables feature powerful hydraulic clamping and can be accessorized with a variety of options.



RNCM-401R

Specifications ►

Dimensions = mm

Table Model		RNCM-251	RNCM-301	RNCM-401
Versions available		R, L	R, L	R, L
Table diameter		250	320	400
Center height		160	210	255
Center bore	Nose Diameter	40H7	40H7	40H7
	Thru Diameter	32	40	40
Table T-slot width		12H7	14H7	14H7
Guide block width		18h7		
Servo motor (Fanuc)*		Alpha 8i	Alpha 12i	Alpha 12i
Maximum motor speed rpm		3,000		
Speed reduction ratio		1/180		
Maximum table speed rpm		16.7		
Inertia converted into motor shaft x 10 ⁻³ kg·m ²		.30	1.76	2.05
Clamp system**		Hydraulic		
Clamp torque @500psi Nm (ft. lbs.)		490 (361)	833 (614)	1,764 (1,300)
Indexing accuracy arc sec.		±7.5		
Repeatability arc sec.		±2		
Net Weight kg (lbs.)		75 (165)	200 (440)	300 (660)
Allowable wheel torque Nm (ft. lbs.)		470 (346)	764 (563)	1,666 (1,228)
Allowable work inertia kg·m ²		1.2	3.7	9.7
Allowable work weight	 kg (lbs) [w/ tailstock] [250 (550)]	100 (220) [250 (550)]	150 (330) [350 (770)]	200 (440) [500 (1,100)]
	 kg (lbs)	250 (550)	350 (770)	500 (1,100)
Allowable load when table clamped	 N (lbf)	19,600 (4,390)	29,400 (6,585)	39,200 (8,781)
	 Nm (ft. lbs.)	490 (361)	833 (614)	1,764 (1,300)
	 Nm (ft. lbs.)	931 (686)	1,568 (1,156)	2,450 (1,806)

* Other motors & RPM available

** Booster optional

Specifications subject to change without notice

Technitron

Integration Services
www.technitron.com

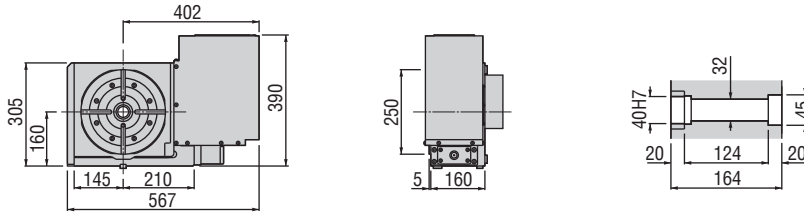


3980 Webster Avenue Cincinnati, OH 45212 Phone: 513.531.2926 info@technitron.com

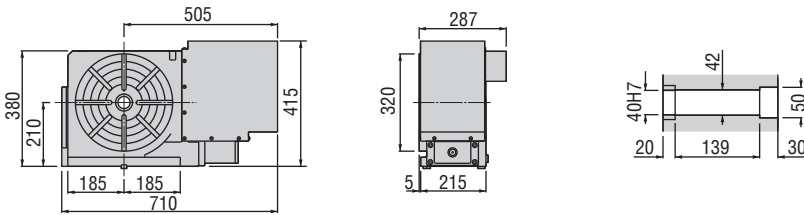
Dimensions ▶

Drawings not to scale • Dimensions = mm

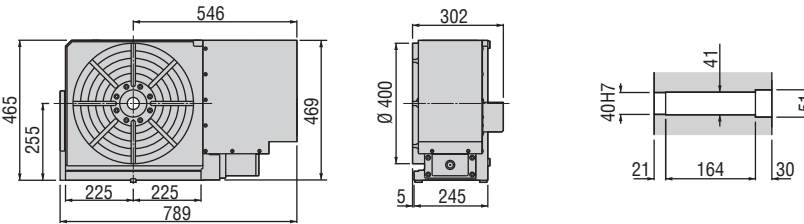
RNCM-251R



RNCM-301R



RNCM-401R



● RNCM-401L



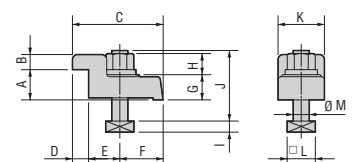
The dimensions above are for tables with a FANUC servo motor. Other motors available (dimensions may increase).

Clamping Block and Bolt ▶

Dimensions = mm

	Type	Q'ty	T-Slot Width	A	B	C	D	E	F	G	H	I	J	K	L	M
RNCM-251	I	4	18	25	12	80	12	33	35	22	21	11	65	40	28	16
RNCM-301	I	4	18	30	15	90	16	31	43	25	21	11	70	46	28	16
RNCM-401	I	4	18	30	15	90	16	31	43	25	21	11	70	46	28	16

Type I



Note: When using a machine with a T-slot pitch other than the above, use suitable clamping blocks and bolts that are available on the market, or order custom-made ones from KOMA (opt.)