

RNCK-501, 631

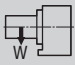
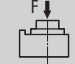
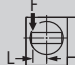
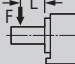
POWERFUL HYDRAULIC CLAMPING

The RNCK-Series rotary tables have been designed for use on horizontal machining centers. These tables are typically pallet mounted for use in high production machining environments. An RNCK-631-BB (Big Bore) table is also available (see page 42).



Specifications ►

Dimensions = mm

| Table Model | | RNCK-501 | RNCK-631 |
|------------------------------------|--|----------------------------|----------------------------|
| Table diameter | | 500 | 630 |
| Center height | | 310 | 400 |
| Center bore | Nose Diameter | 50H7 | 60H6 |
| | Thru Diameter | 50 | 60 |
| Table T-slot width | | 18H7 | |
| Guide block width | | 18h7 | |
| Servo motor (Fanuc)* | | Alpha 12i | |
| Maximum motor speed | rpm | 3,000 | |
| Speed reduction ratio | | 1/180 | |
| Maximum table speed | rpm | 16.7 | |
| Inertia converted into motor shaft | $\times 10^{-3}\text{kg}\cdot\text{m}^2$ | 3.09 | 5.55 |
| Clamp system** | | Hydraulic | |
| Clamp torque @500psi | Nm (ft. lbs.) | 2,450 (1,806) | 4,410 (3,250) |
| Indexing accuracy | arc sec. | ± 7.5 | ± 7.5 |
| Repeatability | arc sec. | ± 2 | ± 2 |
| Net Weight | kg (lbs.) | 450 (990) | 800 (1,760) |
| Allowable wheel torque | Nm (ft. lbs.) | 2,450 (1,806) | 4,116 (3,033) |
| Allowable work inertia | kg·m ² | 18.2 | 39.7 |
| Allowable work weight |  kg (lbs) [w/ tailstock] | 250 (550) [600 (1,320)] | 400 (880) [800 (1,760)] |
| Allowable load when table clamped |  N (lbf) | 49,000 (10,976) | 49,000 (10,976) |
| |  Nm (ft. lbs.) | 2,450 (1,806) | 4,410 (3,250) |
| |  Nm (ft. lbs.) | 3,430 (2,528) | 7,840 (5,778) |

* Other motors & RPM available

** Booster optional

Specifications subject to change without notice

Technitron

Integration Services
www.technitron.com

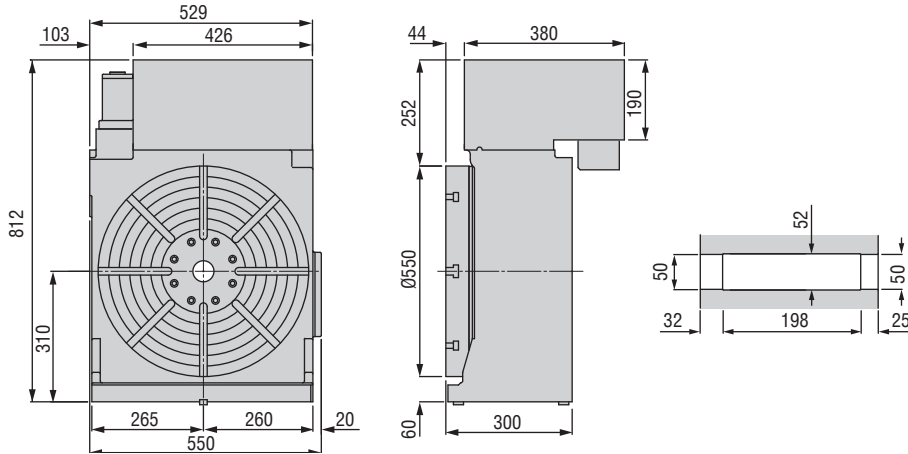


3980 Webster Avenue Cincinnati, OH 45212 Phone: 513.531.2926 info@technitron.com

Dimensions ▶

Drawings not to scale • Dimensions = mm

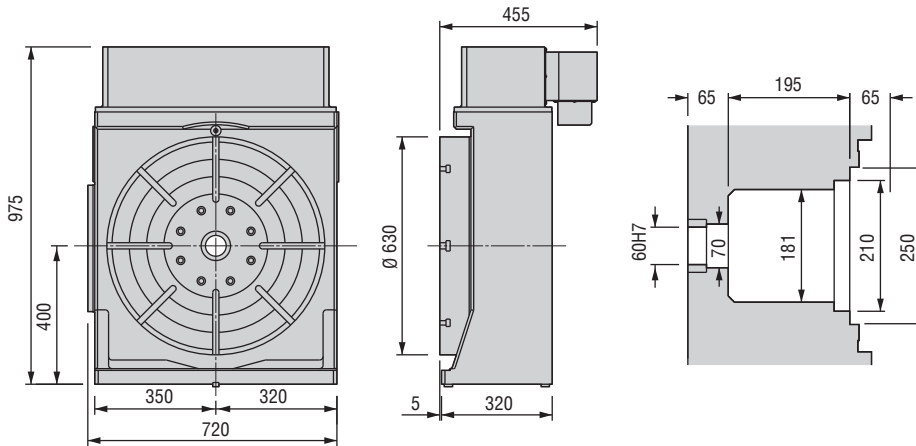
RNCK-501



• RNCK-631-BB



RNCK-631



The dimensions above are for tables with a FANUC servo motor. Other motors available (dimensions may increase).

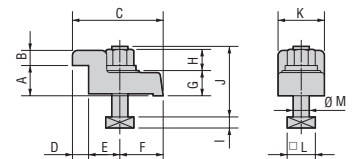
Clamping Block and Bolt ▶

Dimensions = mm

| | Type | Q'ty | T-Slot Width | A | B | C | D | E | F | G | H | I | J | K | L | M |
|----------|------|------|--------------|----|----|-----|----|----|----|----|----|----|-----|----|----|----|
| RNCK-501 | I | 4 | 18 | 40 | 20 | 109 | 18 | 42 | 50 | 25 | 21 | 11 | 70 | 46 | 28 | 16 |
| RNCK-631 | II | 4 | 18 | 40 | 18 | 63 | 18 | 15 | 30 | 58 | 21 | 11 | 105 | 60 | 28 | 16 |

Note: When using a machine with a T-slot pitch other than the above, use suitable clamping blocks and bolts that are available on the market, or order custom-made ones from KOMA (opt.)

Type I



Type II

