

NC Rotary Tables ► Multi-Face Plate, Multi-Spindle Models

RBA-250K-2, 320K-2, 400K-2, 500K-2

HEAVY DUTY • MULTI-FACE PLATE, MULTI-SPINDLE TABLE

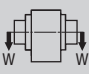

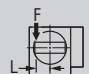
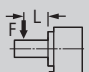
The RBA-Series dual face plate rotary tables are designed for use on pallet equipped horizontal machining centers. RBA-K dual face plate tables utilize a powerful dual disc hydraulic clamping mechanism, and are available with a built-in air/hydraulic booster.



RBA-400K-2

Specifications ►

Dimensions = mm

Table Model	RBA-250K-2	RBA-250K-2,S	RBA-320K-2	RBA-320K-2,S	RBA-400K-2	RBA-500K-2	
Table diameter	250	250	320	320	400	500	
Center height	160	160	210	210	255	310	
Center bore	Nose Diameter	95H7	95H7	130H7	130H7	190H7	220H7
	Thru Diameter	71	71	101	101	151	182
Table T-slot width	12H7	12H7	14H7	14H7	14H7	18H7	
Guide block width	18h7						
Servo motor (Fanuc)*	Alpha 8i	Alpha 8is	Alpha 12i	Alpha 22is	Alpha 12i	Alpha 12i	
Maximum motor speed rpm	3,000	4,000	3,000	4,000	3,000	3,000	
Speed reduction ratio	1/90	1/45	1/90	1/45	1/90	1/180	
Maximum table speed rpm	33.3	88.9	33.3	88.9	33.3	16.7	
Inertia converted into motor shaft x 10 ⁻³ kg·m ²	.94	1.0	3.04	3.47	4.28	3.00	
Clamp system**	Hydraulic						
Clamp torque @500psi Nm (ft. lbs.)	1,000 (737)	1,000 (737)	2,450 (1,806)	2,450 (1,806)	4,200 (3,095)	6,100 (4,496)	
Indexing accuracy arc sec.	±7						
Repeatability arc sec.	±2						
Net Weight kg (lbs.)	105 (231)	105 (231)	185 (407)	185 (407)	300 (660)	550 (1,210)	
Allowable wheel torque Nm (ft. lbs.)	581 (428)	581 (428)	939 (692)	939 (692)	1,666 (1,228)	3,276 (2,414)	
Allowable work inertia kg·m ²	2.34	2.34	5.12	5.12	9.7	18.2	
Allowable load when table clamped	 kg (lbs)	75 (165)	75 (165)	100 (220)	100 (220)	125 (275)	125 (275)
	 N (lbf)	19,600 (4,390)	19,600 (4,390)	29,400 (6,586)	29,400 (6,586)	39,200 (8,781)	49,000 (10,976)
	 Nm (ft. lbs.)	1,000 (737)	1,000 (737)	2,450 (1,806)	2,450 (1,806)	4,200 (3,095)	6,100 (4,496)
	 Nm (ft. lbs.)	980 (722)	980 (722)	3,626 (2,672)	3,626 (2,672)	5,880 (4,334)	13,132 (9,678)

* Other motors & RPM available

** Booster optional

Specifications subject to change without notice



Technitron

Integration Services
www.technitron.com

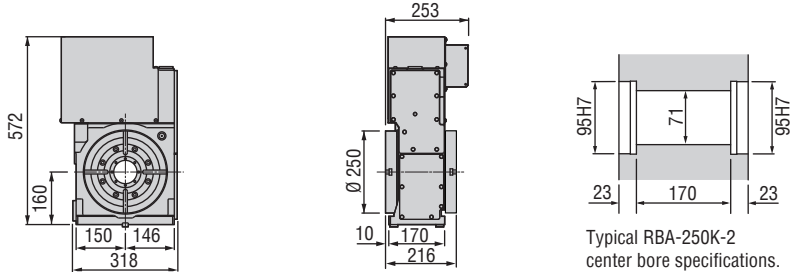
3980 Webster Avenue Cincinnati, OH 45212 Phone: 513.531.2926 info@technitron.com

NC Rotary Tables ▶ Multi-Face Plate, Multi-Spindle Models

Dimensions ▶

Drawings not to scale • Dimensions = mm

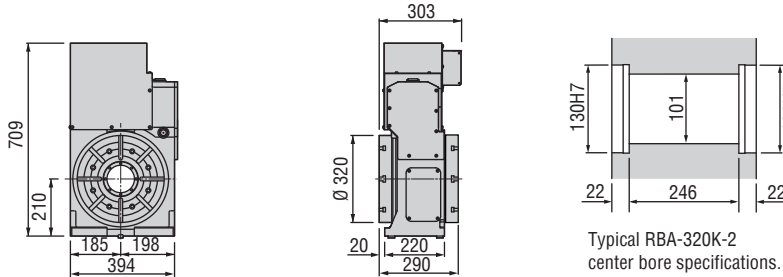
RBA-250K-2



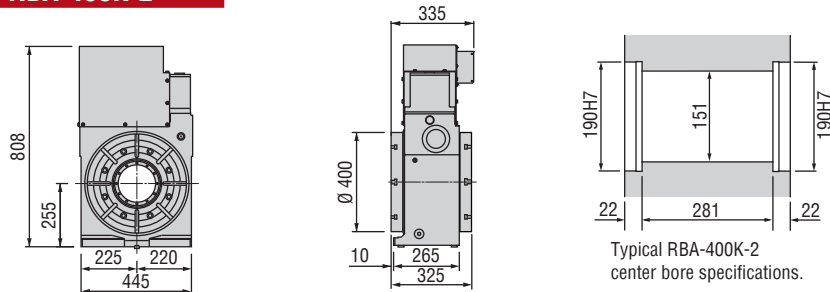
● RBA-500K-2 with custom swivel box



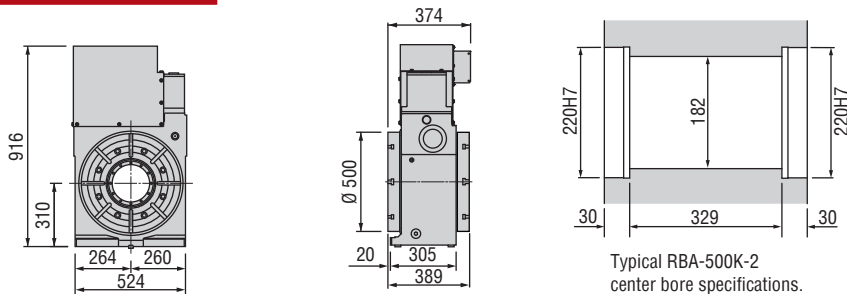
RBA-320K-2



RBA-400K-2



RBA-500K-2



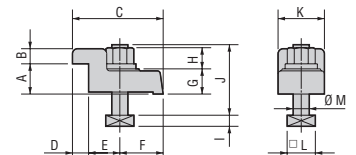
The dimensions above are for tables with a FANUC servo motor. Other motors available (dimensions may increase).

Clamping Block and Bolt ▶

Dimensions = mm

	Type	Q'ty	T-Slot Width	A	B	C	D	E	F	G	H	I	J	K	L	M
RBA-250K-2	I	4	18	25	12	80	12	33	35	22	21	11	65	40	28	16
RBA-320K-2	I	4	18	30	15	90	16	31	43	25	21	11	70	46	28	16
RBA-400K-2	I	4	18	30	15	90	16	31	43	25	21	11	70	46	28	16
RBA-500K-2	I	4	18	40	20	110	18	42	50	25	21	11	70	46	28	16

Type I



Note: When using a machine with a T-slot pitch other than the above, use suitable clamping blocks and bolts that are available on the market, or order custom-made ones from KOMA (opt.)