

Technical Data on TF- and T1-fix* Rotary Tables



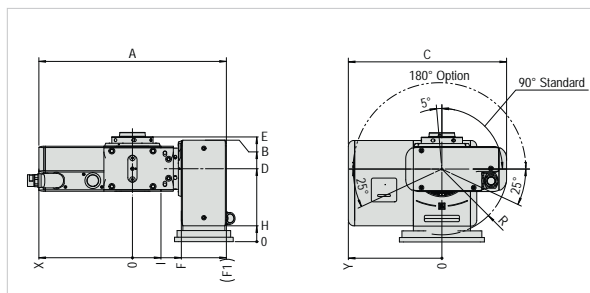
See **main catalog** for details and further models (*fixX, vario, varioX...) and our conditions

			TF-507510	TF-510520 (TF-511520)	T1-507510	T1-510520 (T1-511520)	T1-520520	
Dimensions	Swivel ø	mm	200	240	200	240	350	
	Swiveling range	degrees	90° +5°/-25° (optional 180° ±25°)					
	Center height	mm	150	180	190	220	250	
	Total weight	with motor kg	61	104	96	136	187	
	Center bore	mm	30	34	30	34	46 / (64)	
Bearing / Clamping	Max clamping torque	4. axis Nm	300	800 (600)	300	800 (600)	2'000	
		5. axis Nm	800	2'000	1'100	2'600	4'000	
	Max spindle load	0°-30°	kg	40	66	80	133	200
		30°-90°	kg	27	44	53	89	133
		standard load*	kg	17	42 (21)	17	42 (21)	67
Max axial force	4. axis kN	6	10	12	20	40		
Max pull-out torque	4. axis Nm	1'200	2'000	1'200	2'000	3'900		
	5. axis Nm	2'000	3'900	2'000	3'900	3'900		
Gear Unit	Max moment of inertia	standard load* kgm²	0.05	0.2 (0.07)	0.05	0.2 (0.07)	0.8	
		J max kgm²	0.5	2 (0.7)	0.5	2 (0.7)	8	
	Feed torque max	4. axis Nm	120	250 (150)	120	250 (150)	440	
		5. axis Nm	250	440	250	440	440	
	Pa **	4. axis ± arc sec	20/12	17/10	20/12	17/10	12/8	
		5. axis ± arc sec	23/16	28/21	23/16	16/12	20/16	
		4. axis ± arc sec	2	2	2	2	2	
	Ps mid	5. axis ± arc sec	2	2	2	2	2	
		Max speed at standard load	4. axis min ⁻¹	111	80 (160)	111	80 (160)	50
	Cycle time 90° min at standard load	5. axis min ⁻¹	60	40	60	40	30	
4. axis sec		0.26	0.31 (0.23)	0.26	0.31 (0.23)	0.41		
5. axis sec	0.41	0.53	0.41	0.53	0.71			
Precision	Concentricity **	on spindle ø µm	6 / 3	6 / 3	6 / 3	6 / 3	6 / 3	
	Axial concentricity **	at spindle end face µm	6 / 3	6 / 3	6 / 3	6 / 3	6 / 3	
	Max axial offset	Dividing to swiveling axis µm	20	20	20	20	20	
	Parallelism **	Spindle to base µm/100mm	10 / 5	10 / 5	10 / 5	10 / 5	10 / 5	

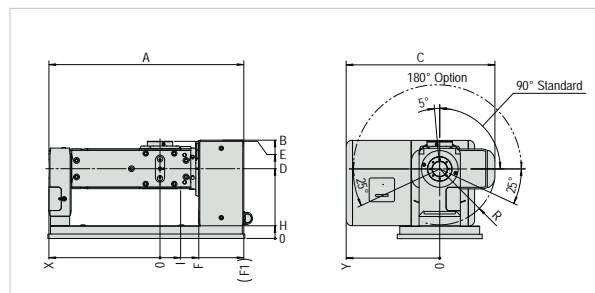
*Mutually dependent (valid for fix models; for further details see **main catalog**)

** Standard / increased

Dimensions



	A	B	C	D	E	F	FI	H	I	R	X	Y
TF-507510	466	245	382	180	260	104	230	30	55	136	236	248
TF-510510	490	265	422	200	287	116	242	50	65	177	248	248
TF-510520	512	310	469	220	307	122	264	40	65	177	248	295
TF-520520	591	320	499	230	330	154	296	50	90	207	295	295



	A	B	C	D	E	F	FI	H	I	R	X	Y
T1-507510	569	255	382	190	269	104	230	40	55	136	339	248
T1-510520	615	310	469	220	307	122	264	40	65	177	351	295
T1-520520	704	340	499	250	350	154	296	40	90	207	408	295

Technitron

LEHMANN®

Integration Services
www.technitron.com

3980 Webster Avenue Cincinnati, OH 45212 Phone: 513.531.2926 info@technitron.com