

Technical Data on T2- and T3 Rotary Tables



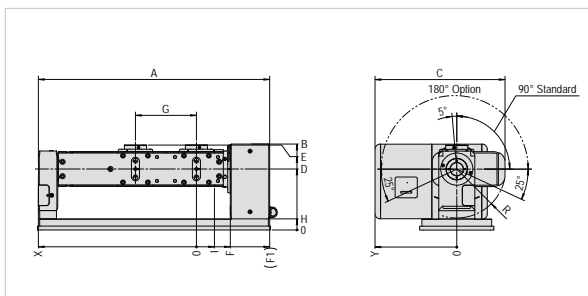
See **main catalog** for details and further models (*fixX, vario, varioX...) and our conditions

			T2-507510	T2-510520 (T2-511520)	T3-507510	T3-510520 (T3-511520)	
Dimensions	Swivel ø	mm	160	220	160	220	
	Spindle distance	mm	160	220	160	220	
	Center height	mm	190	220	190	220	
	Total weight	with motor kg	116	186	151	236	
	Center bore	mm	30	34	30	34	
Bearing / Clamping	Max clamping torque	4. axis 5. axis	Nm Nm	300 1'100	800 (600) 2'600	300 1'100	800 (600) 2'600
	Max spindle load per spindle	0°-30°	kg	40	67	40	67
		30°-90°	kg	27	45	27	45
		standard load*	kg	12	21 (11)	9	14 (7)
	Max axial force	4. axis per spindle	kN	12	20	12	20
	Max pull-out torque	4. axis	Nm	1'200	2'000	1'200	2'000
5. axis		Nm	2'000	3'900	2'000	3'900	
Gear Unit	Max moment of inertia	standard load*	kgm ²	0.05	0.2 (0.07)	0.05	0.2 (0.07)
		J max	kgm ²	0.5	2 (0.7)	0.5	2 (0.7)
	Feed torque max	4. axis	Nm	120	240 (150)	120	225 (150)
		5. axis	Nm	250	440	250	440
	Pa **	4. axis	± arc sec	20/12	17/10	20/12	17/10
		5. axis	± arc sec	30/23	20/16	36/29	24/20
	Ps mid	4. axis	± arc sec	2	2	2	2
		5. axis	± arc sec	2	2	2	2
Max speed at standard load	4. axis	min ⁻¹	100	65 (110)	70	50 (65)	
	5. axis	min ⁻¹	65	40	55	35	
Cycle time 90° min at standard load	4. axis	sec	0.26	0.37 (0.24)	0.32	0.41 (0.31)	
	5. axis	sec	0.41	0.53	0.48	0.58	
Precision	Concentricity **	on spindle ø	µm	6 / 3	6 / 3	6 / 3	6 / 3
	Axial concentricity **	at spindle end face	µm	6 / 3	6 / 3	6 / 3	6 / 3
	Max axial offset	Dividing to swiveling axis	µm	40	40	40	40
	Parallelism **	Spindle to base	µm/100mm	10 / 5	10 / 5	10 / 5	10 / 5

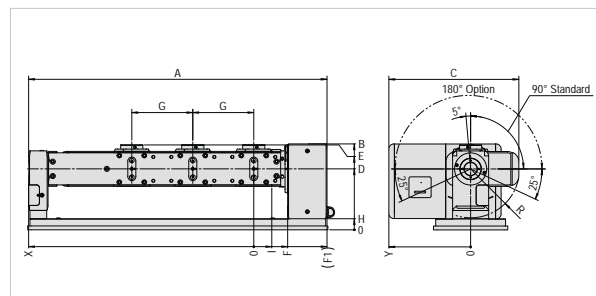
*Mutually dependent (valid for fix models; for further details see **main catalog**)

** Standard / increased

Dimensions



	A	B	C	D	E	F	FI	G	H	R	X	Y
T2-507510	729	255	382	190	269	104	230	160	40	136	499	248
T2-510520	835	310	469	220	307	122	264	220	40	177	571	295



	A	B	C	D	E	F	FI	G	H	R	X	Y
T3-507510	888	255	382	190	269	104	230	160	40	136	658	248
T3-510520	1055	310	469	220	307	122	264	220	40	177	791	295

Technitron

pl LEHMANN

Integration Services
www.technitron.com

3980 Webster Avenue Cincinnati, OH 45212 Phone: 513.531.2926 info@technitron.com