

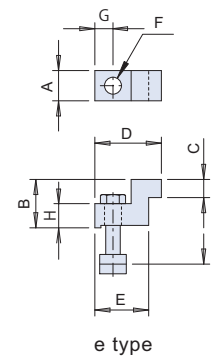
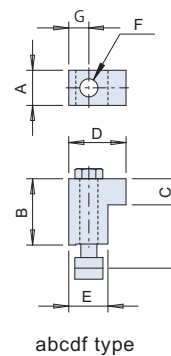
### Mounting Accessories

#### Specifications

Series	Size	Mounting Type	Qty. Used
RS	100	a	2
	170	b	4
	200	b	4
	240	b	4
RC	170	e	2
	200	f	4
	250	c	4
	315	c	4
	400	d	4
RT	80	b	4
	100	b	4

#### Dimensions for Each Type

Mounting Type	Dimensions							
	A	B	C	D	E	F	G	H
a	30	35	15	45	35	14 drill	15	—
b	30	40	15	45	35	14 drill	15	—
c	30	50	20	45	30	18 drill	15	—
d	35	66	26	57	39	18 drill	20	—
e	25	40	15	55	44.5	14 drill	15	20
f	35	40	15	53	38	18 drill	19	—



\* T-nut and hex bolts not included

# Technitron

## Integration Services

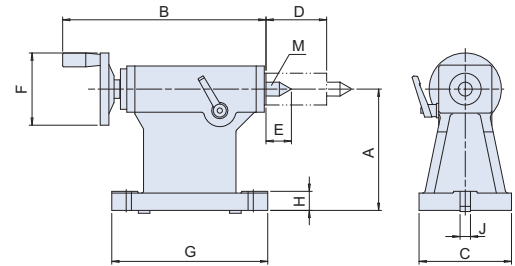
[www.technitron.com](http://www.technitron.com)

3980 Webster Avenue Cincinnati, OH 45212 Phone: 513.531.2926 [info@technitron.com](mailto:info@technitron.com)

## Tailstock

### Dimension Drawings

Model (Tentative)	Center height	Applicable model	Size									
			A	B	C	D	E	F	G	H	J	M
TM115	115	RS170	115	270	115	85	32	φ100	180	18	14	MT#2
TM125	125	RS100, RS200	125	270	115	85	32	φ100	180	21	14	MT#2
TM132	132	RS240	132	270	115	85	32	φ100	180	21	14	MT#2
TM150	150	RC170	150	352	180	105	44	φ100	270	33	14	MT#3
TM165	165	RC200	165	352	180	105	44	φ100	270	33	18	MT#3
TM210	210	RC250	210	352	160	105	44	φ100	270	33	18	MT#3
TM255	255	RC315	255	352	160	105	44	φ100	270	33	18	MT#3
TM300	300	RC400	300	398	220	135	46	φ150	295	43	18	MT#4



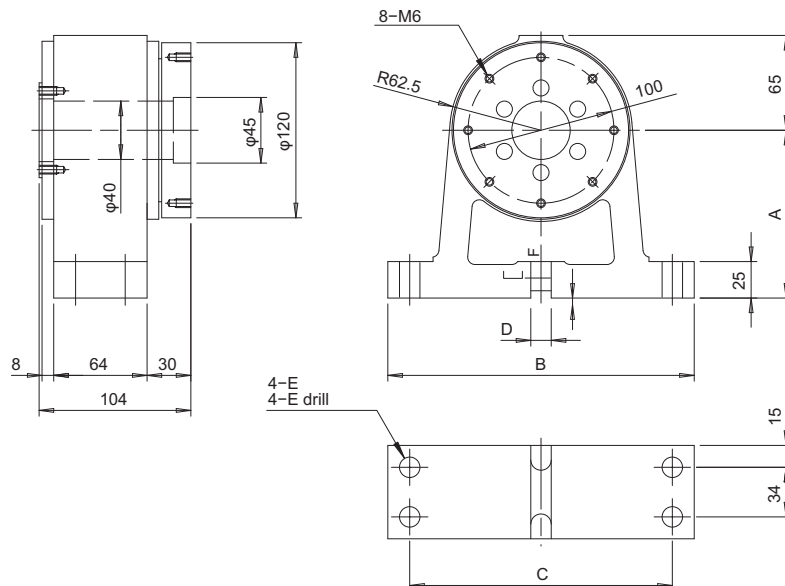
## Support Spindle

### Specifications

Model	Center height	Dimensions						Through-hole dia. [mm]	Product weight [kg]
		A	B	C	D	E	F		
SS115	115	115	210	180	14	14	5	φ40	10
SS165	165	165	230	190	18	18	5	φ40	15

Series	Size	Center height	Support spindle Without clamp	Spacer thickness [mm]
RS	100	125	SS115	10
	170	115	SS115	0
	200	125	SS115	10
	240	132	SS115	17
RC	170	150	SS115	35
	200	165	SS165	0
	250	210	SS165	45
	315	255	SS165	90
	400	300	SS165	135

### Dimensions



## Rotary Joints

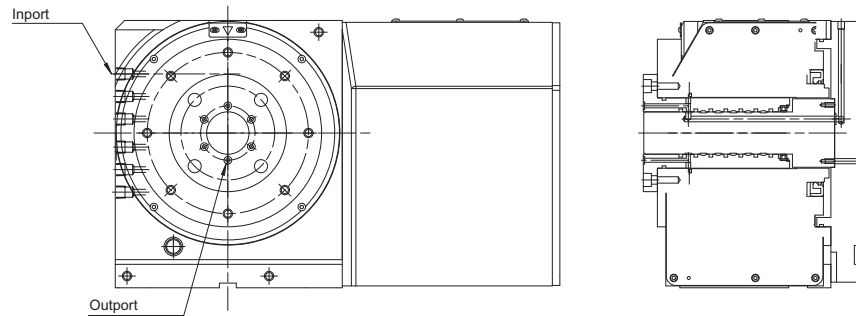
### Specifications

Model	Size	Max number of ports		Maximum actuation pressure
		Built-in	External	
RC	170	6	6+1	Actuation fluid: Hydraulic pressure 6 MPa
	200	6	6+1	
	250	4	6+1	
	315	4	6+1	
	400	4	6+1	
RS	100	4	-	Actuation fluid: Air 0.7 MPa
	170	5	-	
	200	5	-	
	240	5	-	
RT	80	-	-	
	100	2	-	

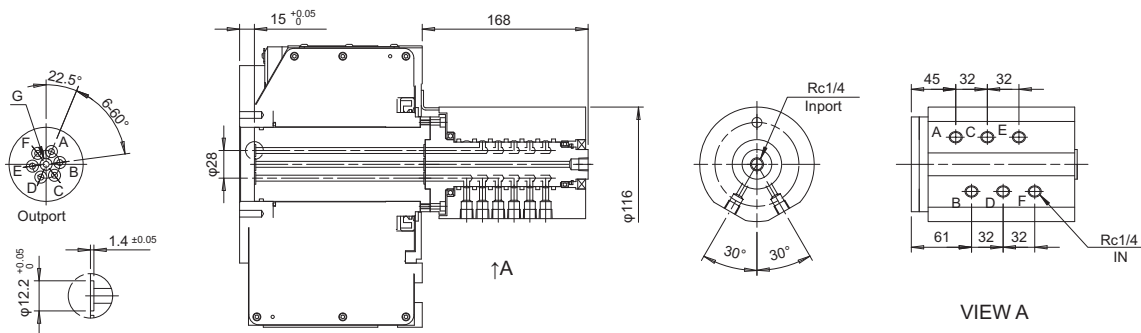
\*1 The +1 indicates the port that in the center bore. \*2 Make sure to furnish a line filter in the air supply line.

\*3 Under prolonged used, a small amount of actuation oil may leak from the oil port toward the adjacent air port. If possible, the adjacent ports should be left open for use as drain ports.

### Built-In



### External



## Compatible Servomotor Models

	Model	FANUC	MITSUBISHI	YASKAWA	SANYO	OKUMA	SIEMENS	HEIDENHAIN
RC series	RC170	aiF2/5000	HF75S			BL-ME24J-50SN		
	RC200	aiF4/4000	HF104S			BL-ME40J-40SN		
	RC250	aiF8/3000	HF154S			BL-ME80J-40SN	1FK7063-5A7F71	QSY116J
	RC315	aiF12/3000	HF204S			BL-ME120J-40SN	1FK7083-5A7F71	QSY155B
	RC400	aiF22/3000	HF303S			BL-ME200J-30SN	1FK70103-5A7F71	QSY190C
RS series	RS100	ais2/5000	HF-KP43JW04-S6	SGMAH-04A2A2S	Q2AA07040DXP00M			
	RS170	ais2/5000	HF-KP43JW04-S6	SGMAH-04A2A2S	Q2AA07040DXP00M			
	RS200	ais4/5000	HF-KP73JW04-S6	SGMAH-08A4A2S	Q2AA08075DXP00M			
	RS240	ais4/5000	HF-KP73JW04-S6	SGMAH-08A4A2S	Q2AA08100DXP00M			
RT series	RT080	Rotary axis	βis1/6000	HF-KP43JW04-S6	SGMAH-04A2A2S	Q1AA06040DXP01M		
		Tilt axis	βis1/6000	HF-KP43JW04-S6	SGMAH-08A4A2D	Q2AA07050DCP00M		
	RT100	Rotary axis	ais2/5000	HF-KP43JW04-S6	SGMAH-08A4A2SJ	Q2AA08075HXP00M		
		Tilt axis	ais4/5000	HF-KP73JW04-S6	SGMAH-08A4A2D	Q2AA08100DBP00M		