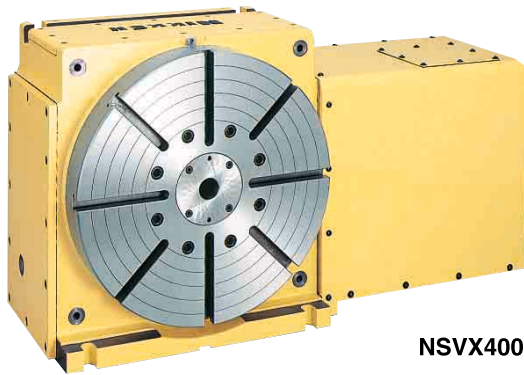


ROTARY HIRTH COUPLING INDEX



NSVX400

INDEXING ACCURACY : $\pm 2''$

- High Rigidity
 - Indexing Accuracy : $\pm 2''$
 - No Lifting up of Table at Indexing Time. (Built-in 3 pieces of Hirth Coupling)
- JAPAN : PAT.



- Explanation of the Code No. (Example)

NSV X 400 F A - M

- No Letter: without motor M: with motor
- No Letter: DC servo motor A: AC servo motor
- Motor Maker
 - A21: with NIKKEN α 21 controller
 - F:FANUC M:MELDAS Y:YASNAC OSP:OSP
 - T:TOSNUC N:NEC S:SANYO Z:SIEMENS
 - I:INDRAMAT H:HEIDENHAIN X:ISOFLEX
 - SEM:SEM B:BOSCH
- No Letter: Right hand mounted motor
- L: Left hand mounted motor
- T: Top mounted
- Diameter of Table 180, 300, 400, 500
- X: Rotary and indexing table ($1''$ and $0.001''$) Z: Indexing table ($1''$)
- Hirth coupling index table

Specifications

Item / Code No.		NSVZ180	NSVZ300	NSVX400	NSVX500	NSVX400T
Diameter of Table	ϕ mm	180	300	400	500	400
Diameter of Spindle Hole	ϕ mm	$\phi 60H7 \ \phi 30$	$\phi 60H7 \ \phi 52$	$\phi 80H7$	$\phi 80H7$	$\phi 80H7$
Centre Height	mm	135	170	240	310	240
Width of T Slot	mm	$12^{+0.018}_0$	$12^{+0.018}_0$	$14^{+0.018}_0$	$14^{+0.018}_0$	$14^{+0.018}_0$
Clamping System	3.5MPa	Hyd.	Hyd.	Hyd.	Hyd.	Hyd.
Clamping Torque	N·m	910	2155	5880	5880	5880
Table Inertia at Motor Shaft ($\frac{GD^2}{4}$) kg·m ² ×10 ⁻³		0.11	0.16	2.9	3.9	2.9
Servo Motor	min ⁻¹	α iF2/5000·2000	α iF2/5000·2000	α iF12/3000·2000	α iF12/3000·2000	α iF12/3000·2000
MIN. Increment		1°	1°	1°*/0.001°	1°*/0.001°	1°*/0.001°
Rotation Speed	min ⁻¹	11.1	11.1	22.2	16.6	16.6
Total Reduction Ratio		1/180	1/180	1/90	1/120	1/120
Indexing Accuracy	sec	± 3	± 2	$\pm 2^*$	$\pm 2^*$	$\pm 2^*$
Net Weight	kg	60	150	325	410	350
MAX. Work Load on the Table	Vertical kg	50	150	250	250	250
	Horizontal kg	100	300	500	500	—
MAX. Thrust Load applicable on the Table	N	23520	39200	58800	58800	58800
	FXL N·m	911	2156	5880	5880	5880
	FXL N·m	569	1421	3920	3920	3920
MAX. Work Inertia	Vertical + ($\frac{GD^2}{4}$) kg·m ²	0.14	1.0	6.4	6.4	11.5
Driving Torque	N·m	—	—	432	576	576

★ NSVZ series are index table which is indexable by $1''$.

★ NSVX series are rotary and indexing table which perform indexing by $1''$ with hirth coupling of high precision & high rigidity and can also perform min. command incremental by $0.001''$ and profile milling. Indexing accuracy = ± 2 sec. marked * is only for indexing by $1''$ with hirth coupling.

★ The supplied hydraulic pressure is 3.5MPa.

★ Be careful that centralizing of work piece or jig fixture should be done after indexing, not rotating.

★ With NIKKEN controller, the solenoid valve is installed inside the table.

★ For additional axis control, the solenoid valve is not installed inside the table.

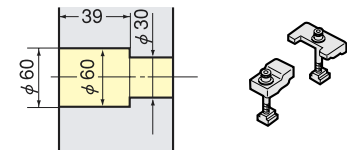
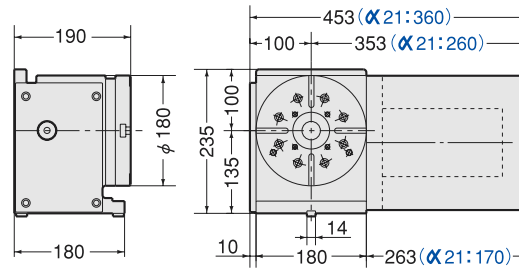
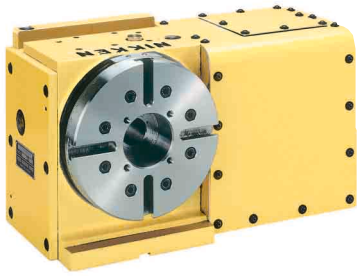
★ α iF4/4000 motor can be mounted on NSVZ180 & 300.

NSVZ180,300 NSVX400,500

NIKKEN

External dimensions will be different according to the type of the servo motors. Dimensions with FANUC motor or with NIKKEN α 21 controller (α 21:) are shown. Please contact with us for CAD data (2D:DXF, 3D:PARASOLID).

NSVZ180



NSVZ300

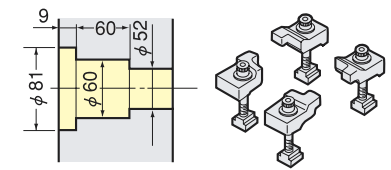
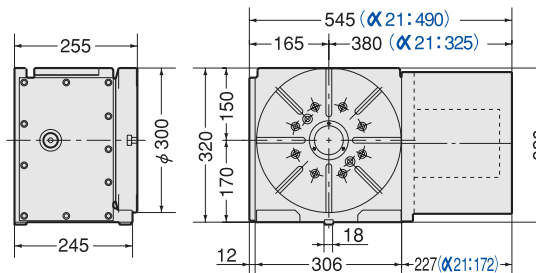
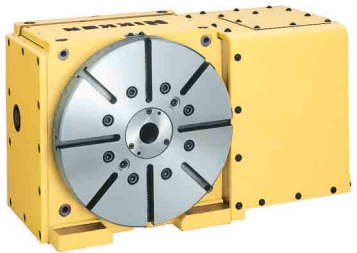


Photo shows with centre socket (option).

NSVX400

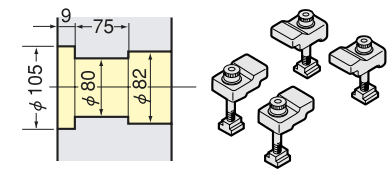
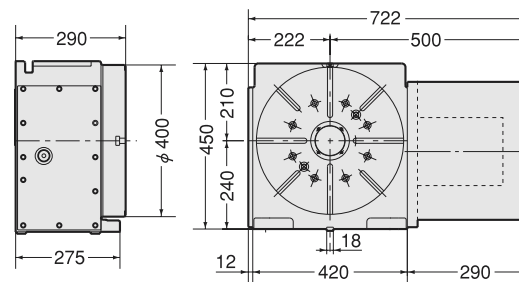
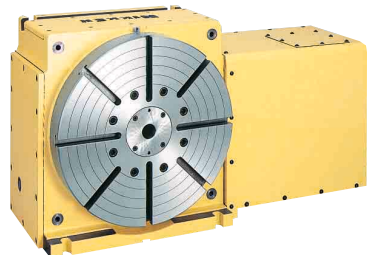
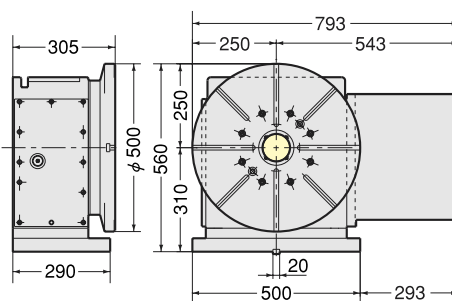
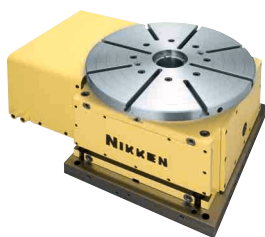


Photo shows with centre socket (option).

NSVX500



NSVX400T

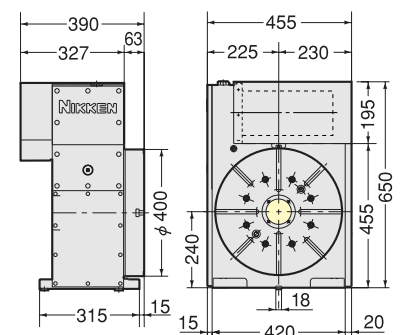
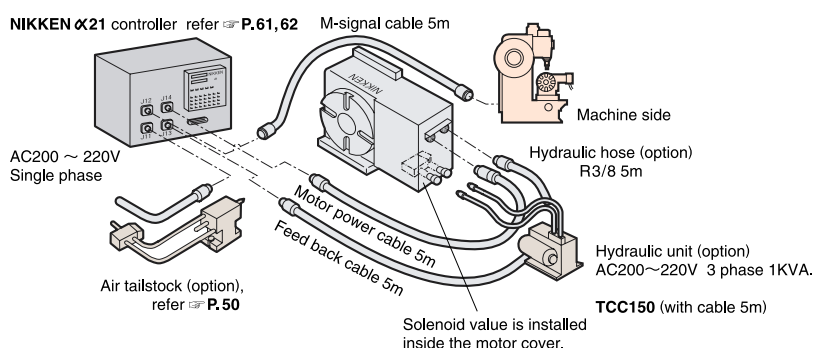


Photo shows only for horizontal use. Please contact us for external dimension.

- ★ For fitting metal and stepped guide piece, refer
- ★ For scroll chuck, tailstock and other optional accessories,



No lift (Three pieces of Hirth Coupling)

Three pieces of 360 division precision hirth coupling ensures smooth and fast indexing without table lifting.

