

MDU TYPE

Vertical Position



NC Rotary Table

- Most suitable for horizontal machining center
→ Less interference between spindle and work-piece
- Using Zero-Backlash Worm Shaft
- Compact external form
- High versatility with big through-hole

- MDU253L
- MDU630R
- MDU323R
- MDU632R
- MDU400R
- MDU800R
- MDU403R
- MDU802R
- MDU500R
- MDU1000R
- MDU503R
- MDU1200R

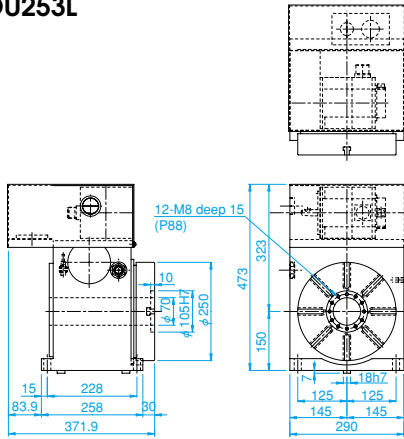
Note1: () means for higher indexing accuracy model with rotary scale.
In this case, the outside drawing will be change in minor. (T.I.R)
Note2: Option: Built-in rotary joint is possible.

Specifications

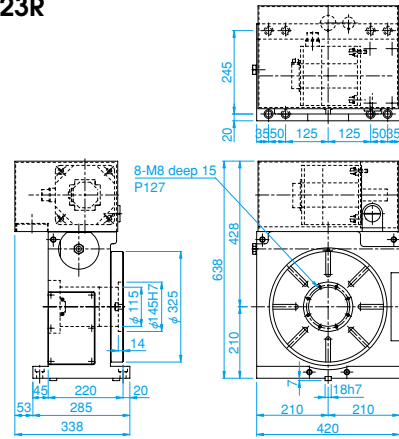
Item	Model	Unit	MDU253L	MDU323R	MDU400R	MDU403R	MDU500R	MDU503R	MDU630R	MDU632R	MDU800R	MDU802R	MDU1000R	MDU1200R
Table Diameter		mm	250	325	400	400	500	500	630	630	800	800	1000	1200
Vertical Center Height		mm	150	210	255	255	280	280	400	400	480	480	590	760
Horizontal Center Height		mm	****	****	****	****	****	****	****	****	****	****	****	****
Through Hole		mm	60	115	170	170	170	170	260	260	260	260	315	50
T Slot Width		mm	12H8	14H7	14H7	14H7	18H7	18H7	18H7	18H7	18H7	18H7	28H12	28H12
Guide Block Width		mm	18h7	18h7	18h7	18h7	18h7	18h7	22h7	22h7	22h7	22h7	22h7	22h7
Servo Motor (FANUC*)			α is8/4000	α is22/4000	α is22/4000	α is22/4000	α is22/4000	α is22/4000	α is22/4000	α is30/4000	α is22/4000	α is30/4000	α is30/4000	α is30/4000
Gear Ratio			1/60	1/60	1/180	1/60	1/180	1/60	1/360	1/120	1/360	1/120	1/360	1/720
Max. R.P.M		min ⁻¹	33.3	33.3	8.3	33.3	8.3	33.3	5.5	16.7	5.5	16.7	4.1	1.66
Motor R.P.M		min ⁻¹	2000	2000	1500	2000	1500	2000	2000	2000	2000	2000	1500	1200
Min. Indexing Unit		deg.	0.001	0.001	0.001	0.001	0.001	0.001	0.001	0.001	0.001	0.001	0.001	0.001
Indexing Accuracy		sec.	12(6)	12(6)	12(6)	12(6)	12(6)	12(6)	12(6)	12(6)	12(6)	12(6)	12(6)	12(6)
Repeatability		sec.	± 2(2)	± 2(2)	± 2(2)	± 2(2)	± 2(2)	± 2(2)	± 2(2)	± 2(2)	± 2(2)	± 2(2)	± 2(2)	± 2(2)
Clamping Torque		N·m	764	2303	4675	4675	4675	4675	4410	4410	5390	5390	8520	13720
Clamping Pressure		Mpa	4.9	4.9	4.9	4.9	4.9	4.9	4.9	4.9	4.9	4.9	4.9	4.9
Permissible Machining Torque of Wheel		N·m	75	1117	1980	2200	1980	2200	6910	7500	6910	7500	12000	12000
Weight		kg	130	230	450	450	470	470	1300	1300	1750	1750	3300	4000
Permissible Load		kg	****	****	****	****	****	****	****	****	****	****	****	****
		kg	120	150	350	350	350	350	800	800	800	800	1200	1200
Max. Machining Force at Clamping		N	32000	46500	56000	56000	56000	56000	75000	75000	75000	75000	96000	96000
		Nm	2240	4900	6400	6400	6400	6400	7000	7000	7000	7000	9000	9000
		Nm	764	2303	4675	4675	4675	4675	4410	4410	4410	4410	8520	8520
Permissible Work Inertia		kg m ²	2.81	6.45	14.4	14.4	22.5	22.5	178.6	178.6	288	288	1080	1080

*Application for other motors, Meltas, Yasukawa, Siemens etc.

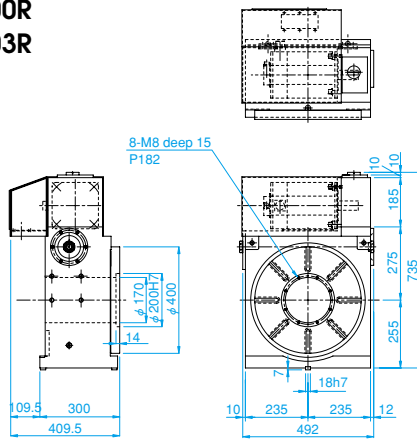
● MDU253L



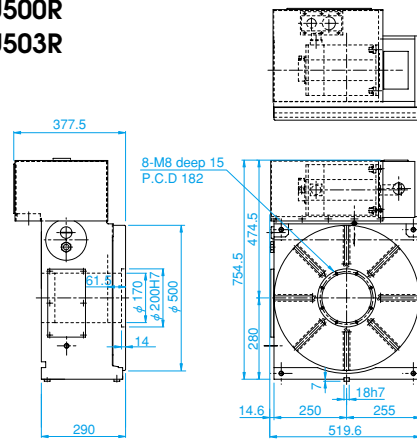
● MDU323R



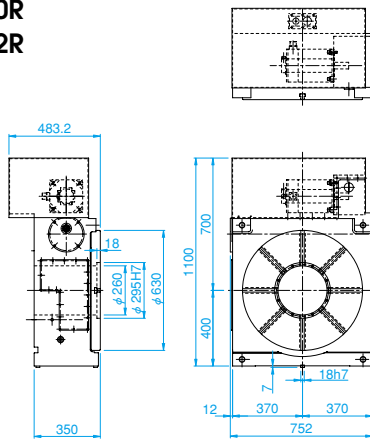
● MDU400R
● MDU403R



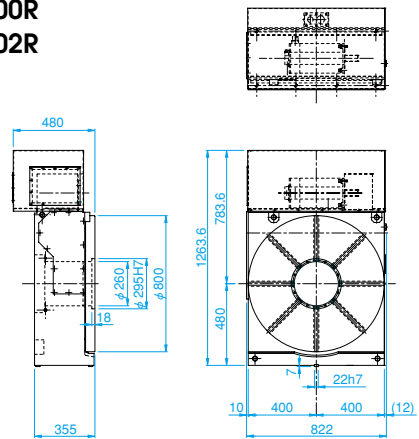
● MDU500R
● MDU503R



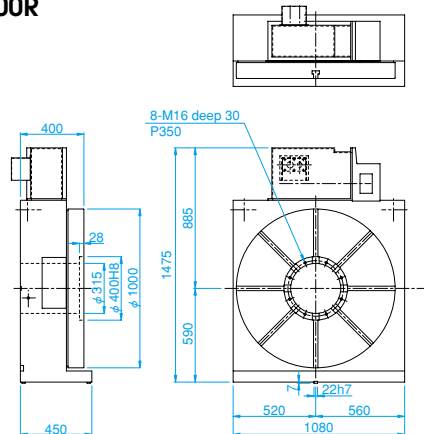
● MDU630R
● MDU632R



● MDU800R
● MDU802R



● MDU1000R



● MDU1200R

