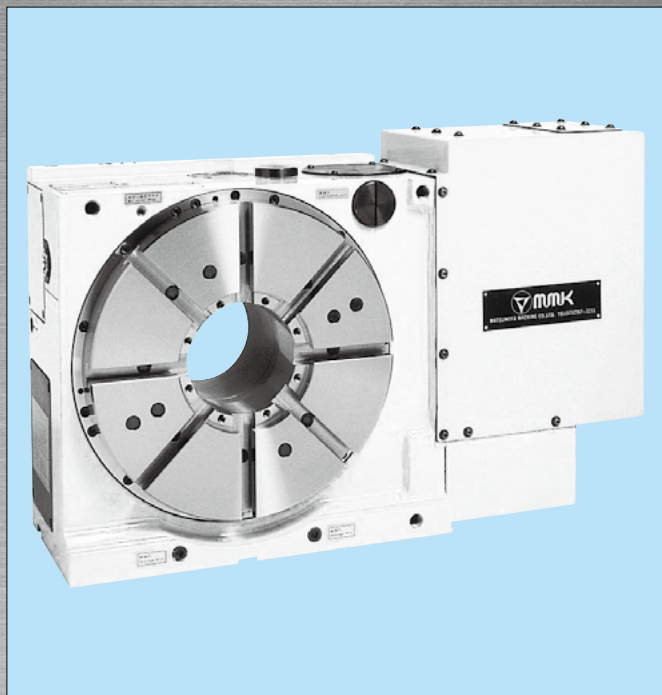


MD TYPE

Able to use as Vertical or Horizontal Position



NC Rotary Table

- Most suitable for vertical machining center
 - Less interference between spindle and work-piece
- Using Zero-Backlash Worm Shaft
- Compact external form
- High versatility with big through-hole

- MD323R
- MD632R
- MD400R
- MD800R
- MD403R
- MD802R
- MD500R
- MD1000R
- MD503R
- MD1200R
- MD630R

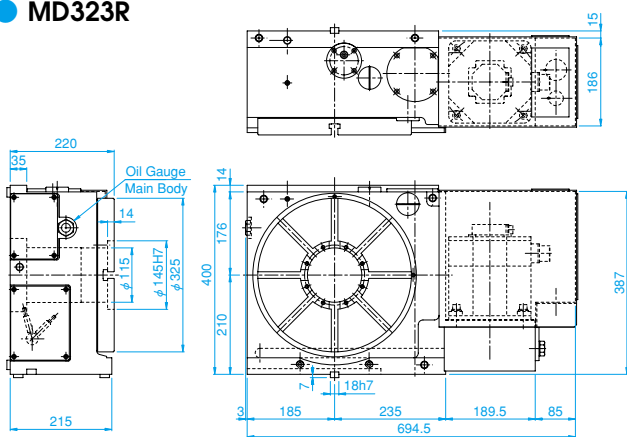
Note1: () means for higher indexing accuracy model with rotary scale.
In this case, the outside drawing will be change in minor. (T.I.R)
Note2: Option: Built-in rotary joint is possible.

Specifications

Item	Model	Unit	MD323R	MD400R	MD403R	MD500R	MD503R	MD630R	MD632R	MD800R	MD802R	MD1000R	MD1200R
Table Diameter		mm	325	400	400	500	500	630	630	800	800	1000	1200
Vertical Center Height		mm	210	255	255	280	280	400	400	480	480	600	****
Horizontal Center Height		mm	220	290	290	290	290	325	325	360	325	400	400
Through Hole		mm	115	170	170	170	170	260	260	260	260	315	320
T Slot Width		mm	14H7	14H7	14H7	18H7	18H7	18H7	18H7	18H7	18H7	28H12	28H12
Guide Block Width		mm	18h7	18h7	18h7	18h7	18h7	22h7	22h7	22h7	22h7	28h7	***
Servo Motor (FANUC*)			α is22/4000	α is22/4000	α is22/4000	α is22/4000	α is22/4000	α is22/4000	α is22/4000	α is22/4000	α is30/4000	α is30/4000	α is30/4000
Gear Ratio			1/60	1/180	1/60	1/180	1/60	1/360	1/120	1/360	1/120	1/360	1/720
Max. R.P.M		min ⁻¹	33.3	11.1	33.3	8.3	33.3	5.5	16.7	5.5	16.7	4.1	2
Motor R.P.M		min ⁻¹	2000	2000	2000	1500	2000	2000	2000	2000	2000	1500	1440
Min. Indexing Unit		deg.	0.001	0.001	0.001	0.001	0.001	0.001	0.001	0.001	0.001	0.001	0.001
Indexing Accuracy		sec.	12(6)	12(6)	12(6)	12(6)	12(6)	12(6)	12(6)	12(6)	12(6)	12(6)	12(6)
Repeatability		sec.	± 2(2)	± 2(2)	± 2(2)	± 2(2)	± 2(2)	± 2(2)	± 2(2)	± 2(2)	± 2(2)	± 2(2)	± 2(2)
Clamping Torque		N·m	2303	4674	4674	4674	4674	4410	4410	4410	4410	8520	9604
Clamping Pressure		Mpa	4.9	4.9	4.9	4.9	4.9	4.9	4.9	4.9	4.9	4.9	4.9
Permissible Machining Torque of Wheel		N·m	117	1980	2200	1980	2200	6910	7500	6910	7500	12000	16500
Weight		kg	220	420	420	470	420	980	980	1500	1500	3300	3500
Permissible Load		kg	350	500	500	500	500	2500	2500	2500	2500	6000	6000
		kg	150	350	350	350	350	800	800	800	800	1200	****
Max. Machining Force at Clamping		N	46500	56000	56000	56000	56000	75000	75000	75000	75000	96000	96000
		Nm	4900	6400	6400	6400	6400	7000	7000	7000	7000	9000	9000
		Nm	2303	4675	4675	4675	4675	4410	4410	4410	4410	8520	9604
Permissible Work Inertia		kg·m ²	6.45	14.4	14.4	22.5	22.5	178.6	178.6	288	288	1080	1555

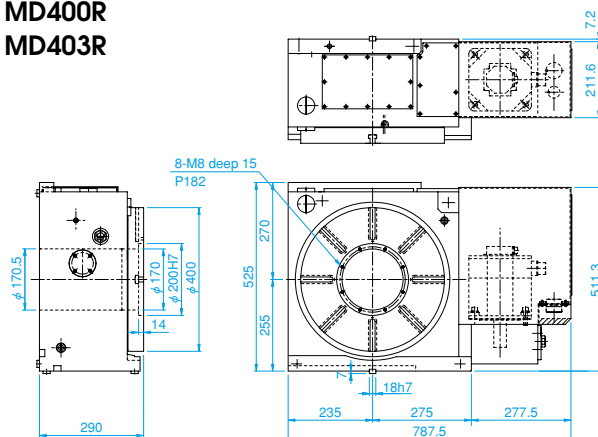
*Application for other motors, Meltas, Yasukawa, Siemens etc.

● MD323R



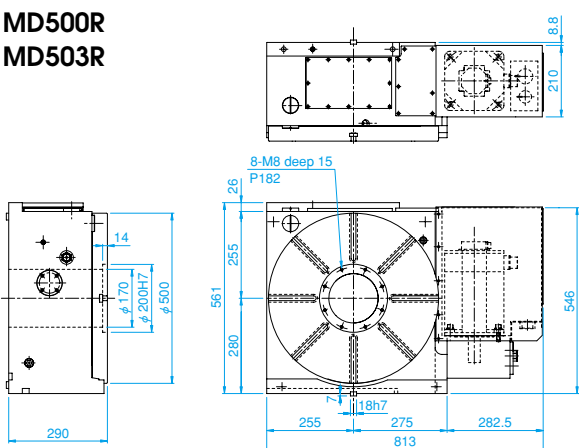
● MD400R

● MD403R



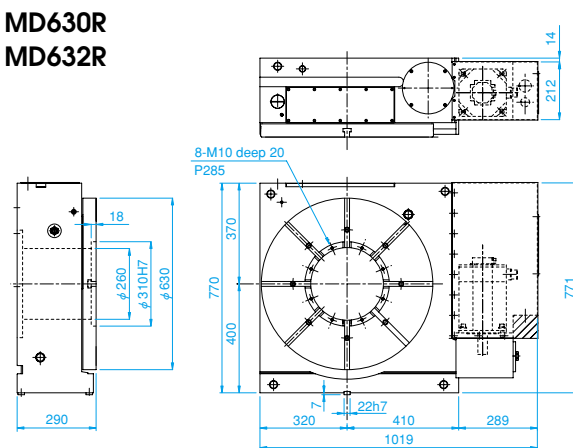
● MD500R

● MD503R



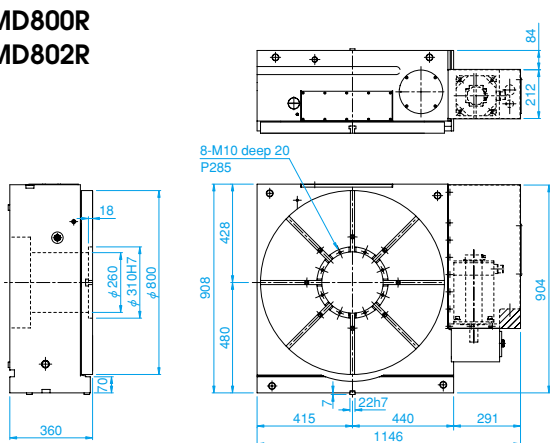
● MD630R

● MD632R

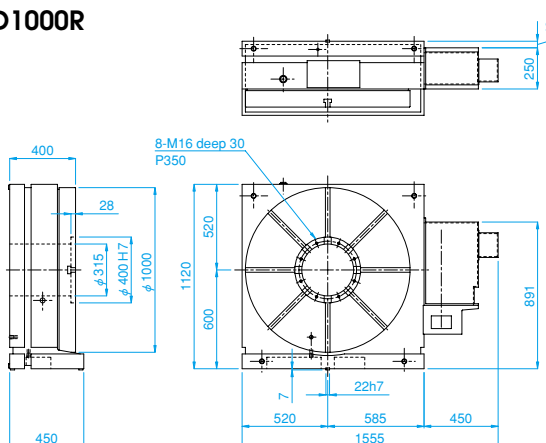


● MD800R

● MD802R



● MD1000R



● MD1200R

