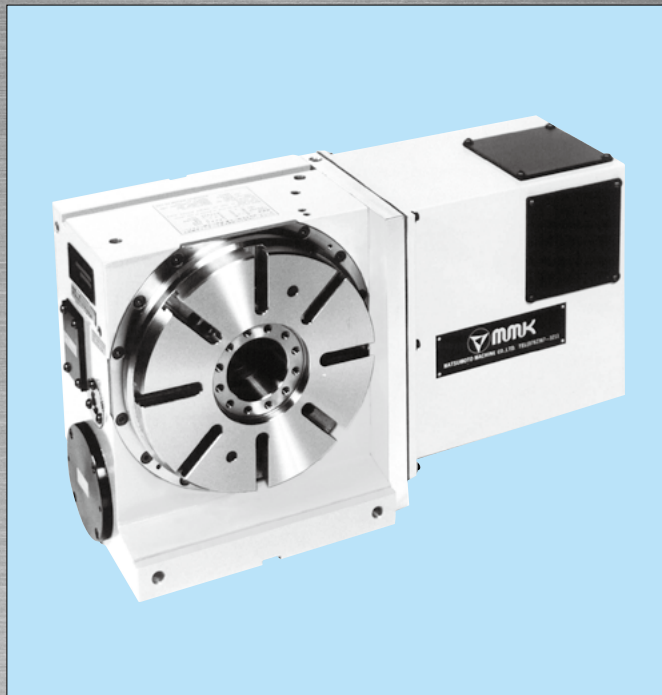


# MDH TYPE

Able to use as Vertical or Horizontal Position



## NC Rotary Table

- High Accuracy ☆ High Rigidity ☆ High Durability
- Most suitable for vertical machining center
  - Less interference between spindle and work-piece
- Using Zero-Backlash Worm Shaft
- Compact external form
- High versatility with big through-hole

- MDH233R
- MDH356R
- MDH253R
- MDH453R
- MDH256R
- MDH630R
- MDH323R

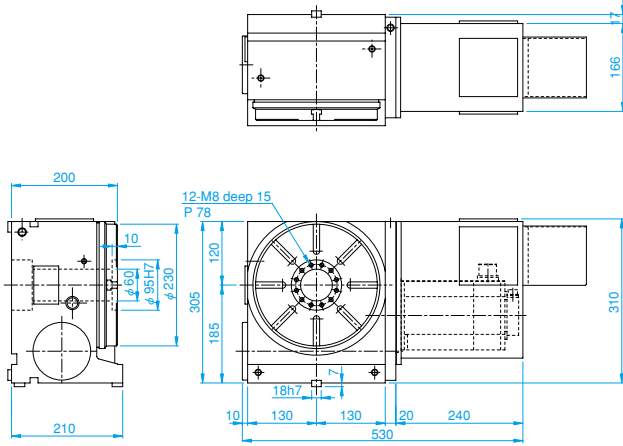
Note1: () means for higher indexing accuracy model with rotary scale.  
 In this case, the outside drawing will be change in minor. (T.I.R)  
 Note2: Option: Built-in rotary joint is possible.

### Specifications

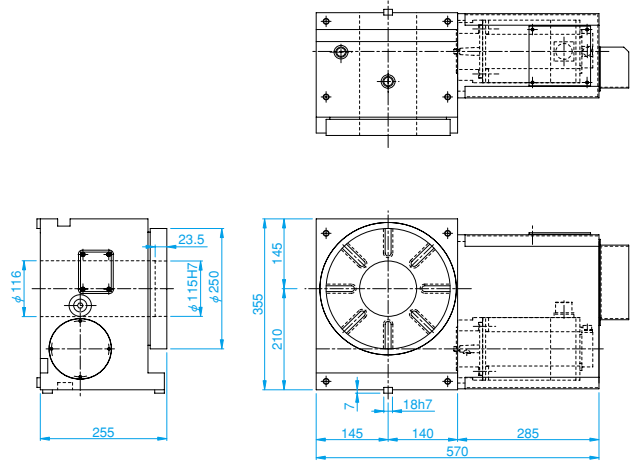
| Item                                  | Model | Unit              | MDH233R           | MDH253R            | MDH256R            | MDH323R            | MDH356R            | MDH453R            | MDH630R            |
|---------------------------------------|-------|-------------------|-------------------|--------------------|--------------------|--------------------|--------------------|--------------------|--------------------|
| Table Diameter                        |       | mm                | 230               | 250                | 250                | 325                | 355                | 450                | 630                |
| Vertical Center Height                |       | mm                | 185               | 210                | 210                | 235                | 235                | 255                | 400                |
| Horizontal Center Height              |       | mm                | 200               | 255                | 255                | 220                | 270                | 290                | 370                |
| Through Hole                          |       | mm                | 60                | 115                | 115                | 115                | 150                | 205                | 370                |
| T Slot Width                          |       | mm                | 12H8              | 12H8               | 12H8               | 14H7               | 14H7               | 14H7               | 18H8               |
| Guide Block Width                     |       | mm                | 18h7              | 18h7               | 18h7               | 18h7               | 18h7               | 18h7               | 22h7               |
| Servo Motor (FANUC*)                  |       |                   | $\alpha$ is8/4000 | $\alpha$ is12/4000 | $\alpha$ is12/4000 | $\alpha$ is22/4000 | $\alpha$ is22/4000 | $\alpha$ is22/4000 | $\alpha$ is30/4000 |
| Gear Ratio                            |       |                   | 1/60              | 1/60               | 1/12               | 1/60               | 1/36               | 1/60               | 1/180              |
| Max. R.P.M                            |       | min <sup>-1</sup> | 33.3              | 33.3               | 200                | 33.3               | 66.7               | 33.3               | 8.3                |
| Motor R.P.M                           |       | min <sup>-1</sup> | 2000              | 2000               | 2400               | 2000               | 2400               | 2000               | 1500               |
| Min. Indexing Unit                    |       | deg.              | 0.001             | 0.001              | 0.001              | 0.001              | 0.001              | 0.001              | 0.001              |
| Indexing Accuracy                     |       | sec.              | 12(6)             | 12(6)              | 45(20)             | 12(6)              | 18(6)              | 12(6)              | 12(6)              |
| Repeatability                         |       | sec.              | ± 2(2)            | ± 2(2)             | ± 3(4)             | ± 2(2)             | ± 2(2)             | ± 2(2)             | ± 2(2)             |
| Clamping Torque                       |       | N-m               | 284               | 764                | 764                | 2303               | 3067               | 4674               | 3700               |
| Clamping Pressure                     |       | Mpa               | 4.9               | 4.9                | 4.9                | 4.9                | 4.9                | 4.9                | 4.9                |
| Permissible Machining Torque of Wheel |       | N-m               | 75                | 75                 | 102                | 1117               | 1900               | 2200               | 6910               |
| Weight                                |       | kg                | 110               | 180                | 180                | 220                | 320                | 420                | 950                |
| Permissible Load                      |       | kg                | 200               | 250                | 250                | 350                | 400                | 500                | 2500               |
|                                       |       | kg                | 100               | 120                | 120                | 150                | 200                | 350                | 800                |
| Max. Machining Force at Clamping      |       | N                 | 27000             | 32000              | 32000              | 46500              | 54000              | 56000              | 85000              |
|                                       |       | Nm                | 1150              | 2240               | 2240               | 4900               | 5700               | 6400               | 8600               |
|                                       |       | Nm                | 75                | 764                | 764                | 2303               | 3067               | 4675               | 3700               |
| Permissible Work Inertia              |       | kg m <sup>2</sup> | 1.9               | 2.81               | 1.95               | 6.45               | 9.07               | 18.23              | 178.6              |

\*Application for other motors, Meldas, Yasukawa, Siemens etc.

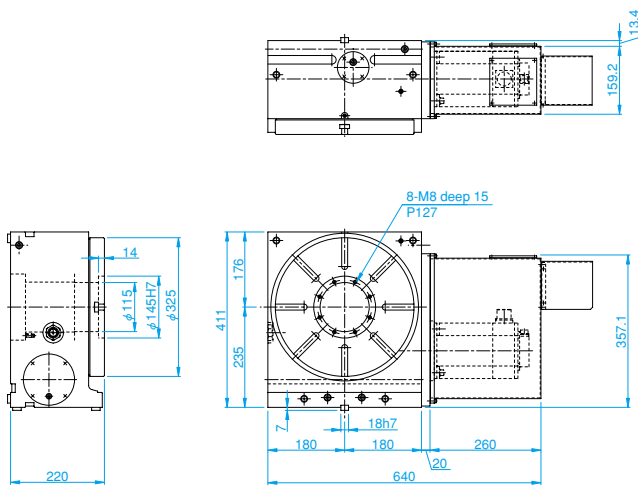
### ● MDH233R



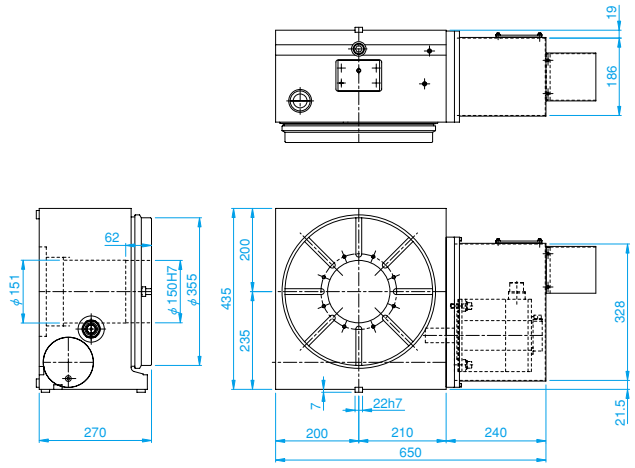
### ● MDH253R ● MDH256R



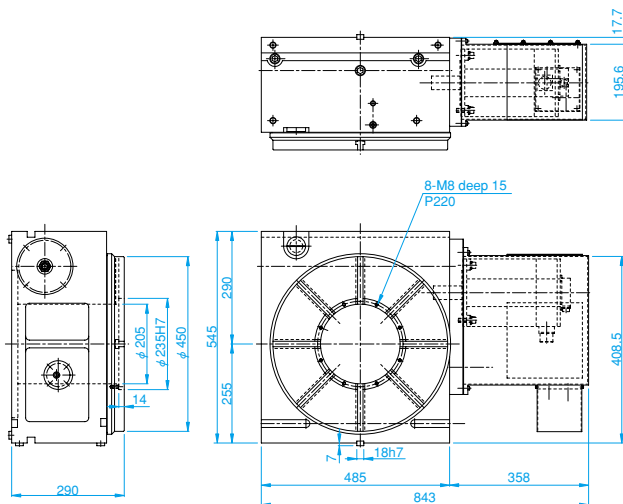
### ● MDH323R



### ● MDH356R



### ● MDH453R



### ● MDH630R

