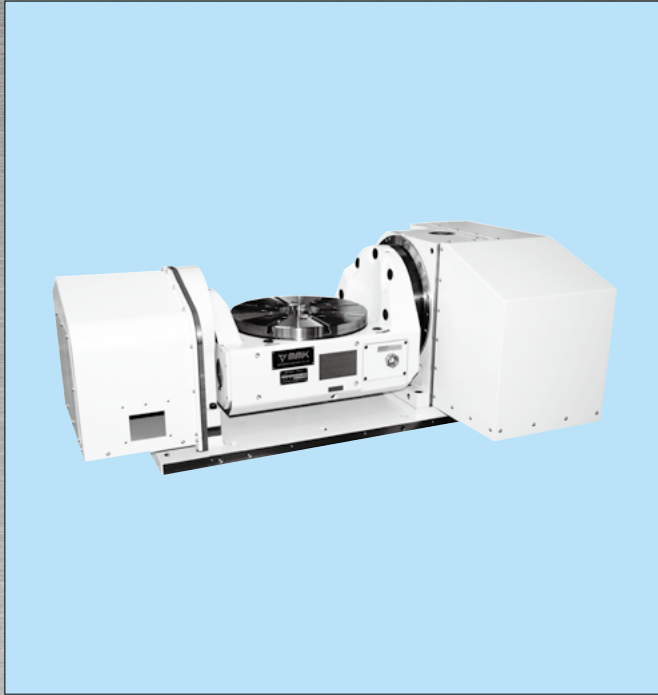


# MDAT TYPE

for 5-face or 5-axis Machining Center



## NC Tilting Rotary Table

- Most suitable for 5-face or 5-axis Machining Center
- Using Zero-Backlash Worm Shaft

- **MDAT232DS**
- **MDAT353S-ECT**
- **MDAT403US-ECT**
- **MDAT630D**

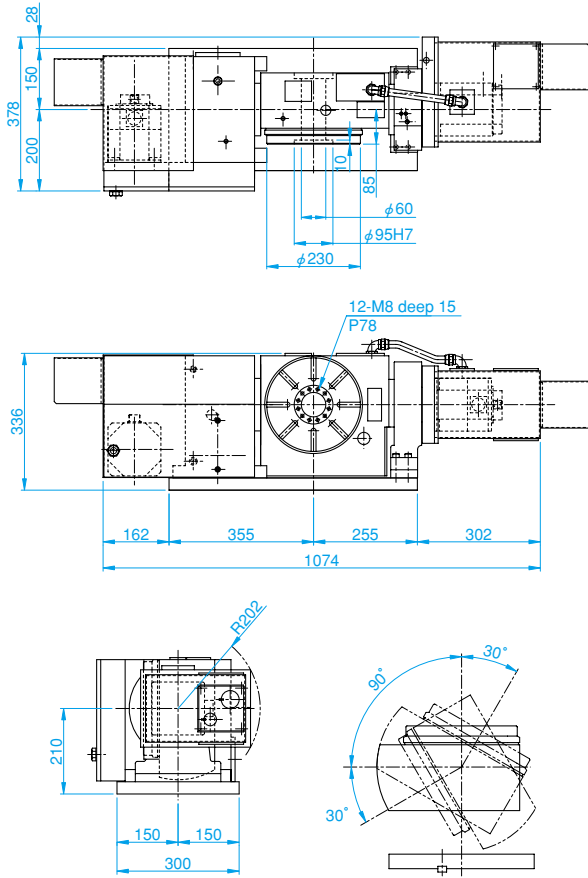
Note1: () means for higher indexing accuracy model with rotary scale.  
In this case, the outside drawing will be change in minor. (T.I.R)  
Note2: Option: Built-in rotary joint is possible.

### Specifications

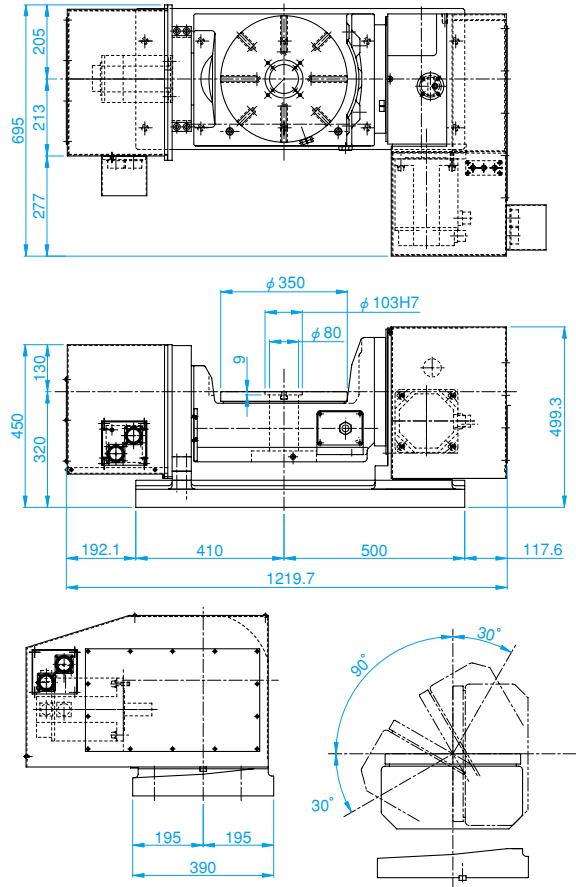
Item	Model	Unit	MDAT232DS	MDAT353S-ECT	MDAT403US-ECT	MDAT630D
Table Diameter		mm	230	350	400	630
Tilting Axis Center Height		mm	210	320	475	480
Table Height in Horizontal		mm	295	320	495	625
Through Hole		mm	60	80	****	254
T Slot Width		mm	12H8	12H8	****	18H7
Servo Motor (FANUC*)	Rotary Axis		$\alpha$ is8/4000	$\alpha$ is8/4000	$\alpha$ is22/4000	$\alpha$ is22/4000
	Tilting Axis		$\alpha$ is8/4000	$\alpha$ is12/4000	$\alpha$ is22/4000	$\alpha$ is22/4000
Gear Ratio	Rotary Axis		1/120	1/90	1/60	1/360
	Tilting Axis		1/120	1/120	1/90	1/360
Max. R.P.M	Rotary Axis	min <sup>-1</sup>	16.7	33.3	33.3	5.5
	Tilting Axis	min <sup>-1</sup>	5	25	11.1	2
Motor R.P.M	Rotary Axis	min <sup>-1</sup>	2000	3000	2000	2000
	Tilting Axis	min <sup>-1</sup>	600	3000	1000	720
Min. Indexing Unit	Rotary Axis	deg.	0.001	0.001	0.001	0.001
	Tilting Axis	deg.	0.001	0.001	0.001	0.001
Indexing Accuracy	Rotary Axis	sec.	14(6)	14(10)	12(6)	12(6)
	Tilting Axis	sec.	45(10)	60(30)	60(10)	45(10)
Repeatability	Rotary Axis	sec.	± 2(3)	± 2(3)	± 2(2)	± 2(2)
	Tilting Axis	sec.	± 3(4)	± 3(4)	± 3(3)	± 3(3)
Clamping Torque	Rotary Axis	N-m	333	1666	4674	1764
	Tilting Axis	N-m	1250	2156	4674	3952
Permissible Machining Torque of Wheel		N-m	735	735	1980	6910
Weight		kg	290	515	1650	2500
Permissible Load		kg	80	265	490	500
Permissible Work Inertia		kg m <sup>2</sup>	0.5	1.1	12.8	35.7

\*Application for other motors, Melder, Yasukawa, Siemens etc.

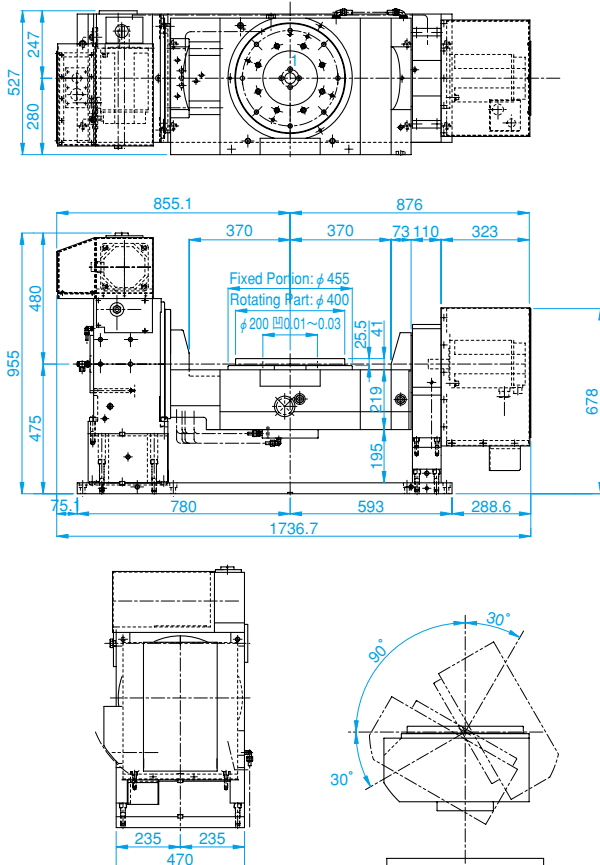
### MDAT232DS



### MDAT353S-ECT



### MDAT403US-ECT



### MDAT630D

