

Sleek, fast and accurate. Engineered to support heavy loads and high-force cutting applications while maintaining accuracy over a long life. Fast clamp and release in milliseconds gives you increased parts-per-hour. Hardinge rotary tables have collet-ready spindles for increased part gripping options.



Face plate included

### Standard Features

- 160 and 210mm slotted face plates are precision ground on a Kellenberger® grinding machine
- A2-4 (GD160LP) and A2-5 (GD210LP) extended-nose spindles accept collets, expanding collets, step chucks, manual chucks, power chucks and slotted face plates
- Built-in clamp to handle off-center drilling, cross-axis milling and other high-force cutting applications
- Fast clamp and release in milliseconds for increased parts-per-hour
- Hardened steel worm and hardened steel worm gear for long life and continued accuracy
- Double eccentric design for finest possible factory gear mesh
- Left- or right-hand motor mount
- Use with all-digital indexer control on most brands of machines, or as 4th-axis (Fanuc, Siemens, Haas, Heidenhain)

Extended-nose spindle design provides optimum clearance.



### Options

- Pneumatic Collet Closer (draw bar force at 70 psi)  
GD160LP – 1825 lb / 828 kg  
GD210LP – 2792 lb / 1266 kg
- GD210LP available with or without collet-ready spindle
- Tailstocks, plate and cube trunnions (GD160LP plate trunnion only)
- Complete array of Hardinge spindle tooling

|  | GD160LP                         | GD210LP                           |
|--|---------------------------------|-----------------------------------|
| <b>INDEXER CONTROL / PROGRAMMING</b>     |                                 |                                   |
| Indexer Control Model                    | Standard Indexer Control        |                                   |
| Storage - Number of programs/steps       | 9999/500                        |                                   |
| RS-232 Interface                         | YES                             |                                   |
| Text Display                             | multiple lines                  |                                   |
| USB 2.0 Upload/Download                  | YES                             |                                   |
| Baud Rate Capacity                       | 19.2 BPS                        |                                   |
| <b>SPINDLE</b>                           |                                 |                                   |
| Runout Maximum (TIR)                     | 0.0002" (.005)                  |                                   |
| Backlash                                 | 40 arc-sec                      |                                   |
| Speed                                    | 0.001 to 240° per sec           |                                   |
| Maximum RPM Rapid <sup>Min-1</sup>       | 40                              |                                   |
| Load Support                             | Dual Bearing                    | Dual Bearing                      |
| Maximum part weight                      | 100 lb / 45 kg                  | 220 lb / 100kg                    |
| Spindle Type                             | A2-4                            | A2-5                              |
| Table Diameter                           | 6.299" (160)                    | 8.267" (210)                      |
| Thru Diameter Face Plate (maximum)       | 1" or 25mm choice               | 2" or 50mm choice                 |
| Thru Dia. Opt. Collet Closer (max)       | 1.08" (27.4)                    | 1.62" (41.27)                     |
| Width of T-slot                          | .44" (11.2)                     | .57" (14.4)                       |
| Collets                                  | Standard 5C                     | Standard 16C                      |
| Spindle center to base                   | 5.000" ± 0.001<br>(127 ± .0254) | 6.000" ± 0.001<br>(152.4 ± .0254) |
| <b>POSITIONING</b>                       |                                 |                                   |
| Accuracy                                 | ±20 arc-sec                     | ±15 arc-sec                       |
| Repeatability                            | ±5 arc-sec                      |                                   |
| Resolution (degree)                      | 0.001                           |                                   |
| Max Rotation/Step (degree) <sup>1</sup>  | 9999.99                         |                                   |
| Gear Diameter (inch/mm)                  | 3.7 (94)                        | 6.2 (157)                         |
| <b>MOTOR</b>                             |                                 |                                   |
| Type (DC servo)                          | 0.78 hp / 0.58kW                | 2.0 hp / 1.50 kW                  |
| Clamping Torque <sup>2</sup> (pneumatic) | 150 ft-lb / 203 Nm              | 275 ft-lb / 373 Nm                |
| Torque at Spindle                        | 73 ft-lb / 99 Nm                | 90 ft-lb / 122 Nm                 |
| Duty Cycle                               | 90% at full speed               |                                   |
| <b>OPERATING SPECIFICATIONS</b>          |                                 |                                   |
| Gear Ratio (worm, gear & timing belt)    | 90:1                            |                                   |
| Operating Temp. (maximum ambient)        | 120°F/49°C                      |                                   |
| Power Requirements (VAC)                 | 115 +/- 5% @ 10 amps            |                                   |
| Maximum Air Pressure                     | 100 psi / 6.9 bar               |                                   |
| Minimum Air Pressure                     | 85 psi / 5.8 bar                |                                   |
| <b>WEIGHT</b>                            |                                 |                                   |
| Rotary Table                             | 120 lb / 57 kg                  | 200 lb / 90.7 kg                  |
| Control                                  | 9.54 lb / 4.34 kg               |                                   |

Notes: 1 – continuous rotation available  
2 – maximum torque applied before slipping occurs



GD160LP  
GD210LP

**Workholding Capacities**

**GD160LP**

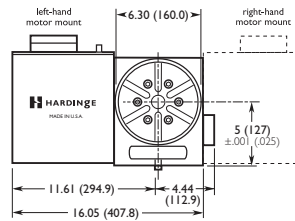
|                                   |                         |
|-----------------------------------|-------------------------|
| Collets – Round (max. capacity)   | 1 1/16" (26.98)         |
| Collets – Hex (max. capacity)     | 29/32" (23.01)          |
| Collets – Square (max. capacity)  | 3/4" (19.05)            |
| Step Chucks – Regular Depth       | up to 4" (101.6)        |
| Step Chucks – Extra Depth         | up to 4" (101.6)        |
| Sure-Grip® Expanding Collets      | 1/8" - 3" (3.17 - 76.2) |
| 3-Jaw Manual Chuck                | 5" (127)                |
| 3-Jaw Manual Chuck                | 6" (152.4)              |
| 3-Jaw Sure-Grip® Power Chuck      | 4" (101.6)              |
| Fixture Plate – Collet Style      | 3 3/8" (85.72)          |
| Fixture Plate – Collet Style      | 4 3/8" (111.12)         |
| Slotted Face Plate (diameter)     | 6.3" (160)              |
| Collet Stops for part positioning | YES                     |

**Workholding Capacities**

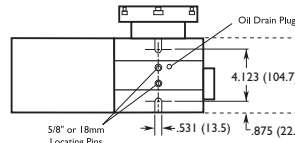
**GD210LP**

|                                   |                           |
|-----------------------------------|---------------------------|
| Collets – Round (max. capacity)   | 1 5/8" (41.27)            |
| Collets – Hex (max. capacity)     | 1 13/32" (35.71)          |
| Collets – Square (max. capacity)  | 1 3/64" (28.97)           |
| Step Chucks – Regular Depth       | up to 6" (152.4)          |
| Step Chucks – Extra Depth         | up to 6" (152.4)          |
| FlexC Collet Systems              | 2 9/16" (65.00)           |
| 3-Jaw Chucks (diameter)           | 5", 6", 8"                |
| Sure-Grip® Expanding Collets      |                           |
| Collet Style                      | 1/2" - 4" (12.70 - 101.6) |
| Spindle Style                     | 1/8" - 4" (3.17 - 101.6)  |
| Fixture Plates                    |                           |
| Spindle Mount                     | 5 1/2" (139.70)           |
| Spindle Mount                     | 8 7/8" (225.42)           |
| Collet Style                      | 6 3/8" (161.92)           |
| Slotted Face Plate                | 8.26" (210)               |
| Slotted Face Plate                | 8 7/8" (225.42)           |
| Slotted Face Plate                | 10" (254)                 |
| Collet Stops for part positioning | YES                       |

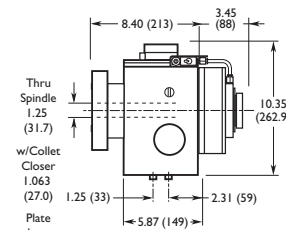
**GD160LP Dimensions:**



Front View

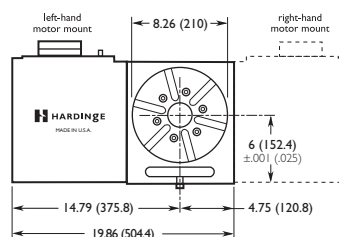


Bottom View

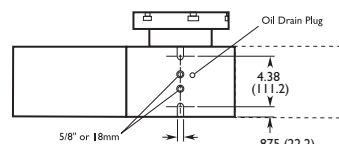


Side View shown with optional Pneumatic Collet Closer

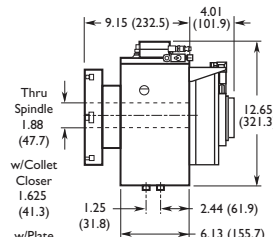
**GD210LP Dimensions:**



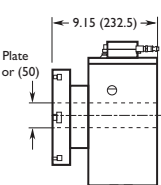
Front View



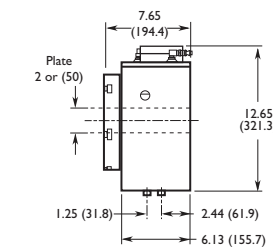
Bottom View



Side View Collet Closer Version

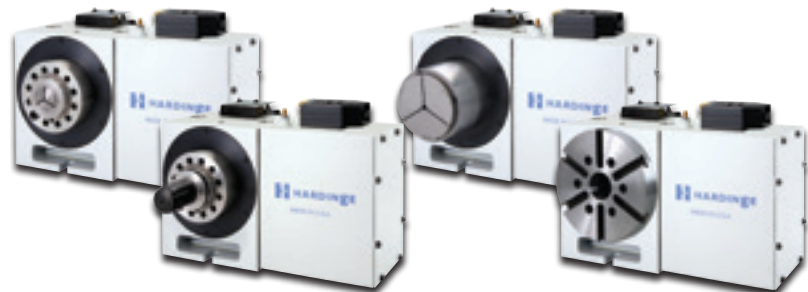


Side View Without Closer Version Extended Nose



Side View Without Closer Version

(millimeters in parentheses)



Hardinge collet-ready spindles accept collets, expanding collets and step chucks with the use of an optional collet closer.