

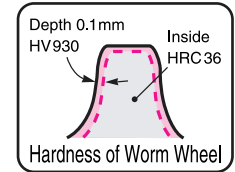
LARGE CNC ROTARY TABLE **NEW**



Worm System



Worm Wheel



Material is special NIKKEN order made steel. Specially hardened and furthermore ion-nitrided on the tooth. Thus, the problem of the sliding friction is solved.

• Explanation of the Code No. (Example)

CNC 1600 F A - M

- No Letter : without motor M : with motor
- No Letter : DC servo motor A : AC servo motor
- Motor Maker P.47
- A21 : with NIKKEN K21 controller
- F:FANUC M:MELDAS Y:YASNAC OSP:OSP3
- T:TOSNAC Z:SIEMENS I:INDRAMAT
- H:HEIDENHAIN X:ISOFLEX SEM:SEM B:BOSCH
- Diameter of Table 1000, 1200, 1600, 2000
- CNC: Standard

Specifications

The specification will be varied according to your application. Please contact us.

Item / Code No.		CNC1000	CNC1200	CNC1201	CNC1600	CNC2000
Diameter of Table	φmm	1000	1200	1200	1600	2000
Diameter of Spindle Hole *1	φmm	300H7	300H7	300H7	400H7	400H7
Centre Height	mm	Horizontal	Horizontal	650	850	Horizontal
Width of T Slot *2	mm	22H7*2	22H7*2	22H7*2	28H7*2	28H7*2
Clamping System		Hyd.	Hyd.	Hyd.	Hyd.	Hyd.
Clamping Torque	N·m	18000	18000	18000	35000	35000
Servo Motor	min ⁻¹	αiF22/3000, 2000		αiF30/3000, 2000		
MIN. Increment		0.001°	0.001°	0.001	0.001	0.001
Rotation Speed *3	min ⁻¹	5.5	5.5	2.7	2.7	2.7
Total Reduction Ratio		1/360	1/360	1/720	1/720	1/720
Indexing Accuracy	sec	15	15	15	15	15
Indexing Accuracy of Ultra Precision	sec	±3	±3	±3	±3	±3
Net Weight	kg	1700	1850	3500*4	5250*4	7700
MAX. Work Load on the Table	Vertical	—	—	6500	10000	—
	Horizontal	7000	7000	13000	30000	30000
MAX. Thrust Load applicable on the Table		137200	137200	254800	392000	392000
		—	—	18000	35000	—
		9600	9600	27000	80000	80000
MAX. Work Inertia	kg·m ²	1300	1300	2300	6400	6400
MAX. Allowable Torque *5	N·m	11000	11000	36000	50000	50000

★*1 Centre hole can not be used for the ultra precision type with the Heidenhain rotary encoder.

★*2 Without T slots is standard for large rotary table. T slot is available as an option. Please specify the width of the T slot.

★*3 Total reduction ratio will be changed for your application. Motor with the reduction mechanism is used for the rotary tables larger equal to CNC1201. It may be difficult for the system without motor or the system motor is supplied. Please contact us.

★*4 The weight is for horizontal use. The weight of the back support for vertical use is not included. Please contact us.

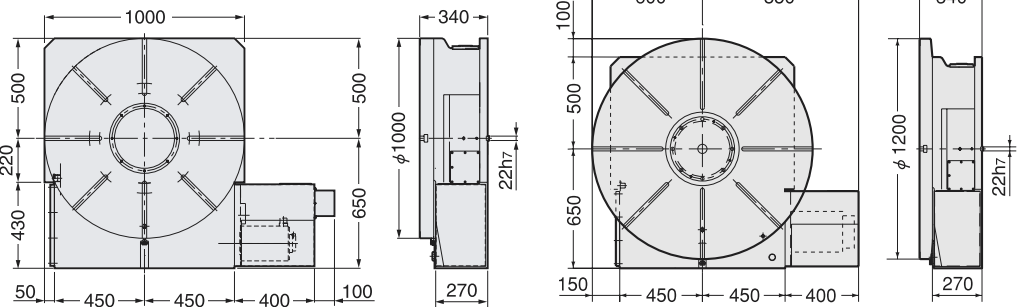
★*5 This is the MAX. allowable torque applied to worm system.

CNC1000,1200,1201,1600,2000

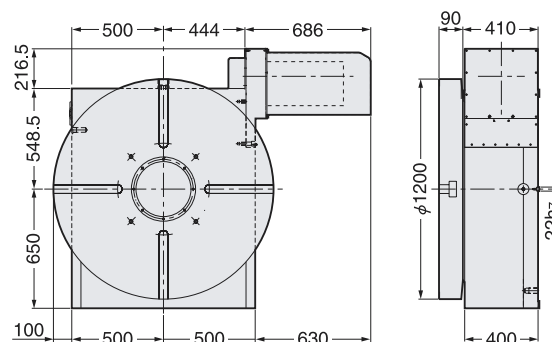
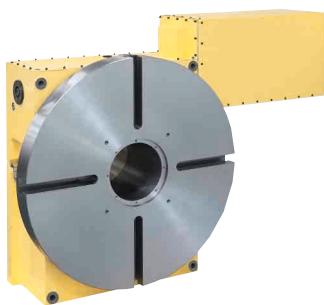
NIKKEN

CNC1000,1200 **NEW**

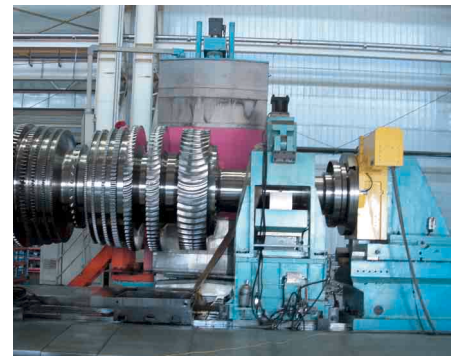
External dimensions will be different according to the type of the servo motors. Dimensions with FANUC motor are shown. Please contact with us for CAD data (2D:DXF, 3D:PARASOLID).



CNC1201 **NEW**

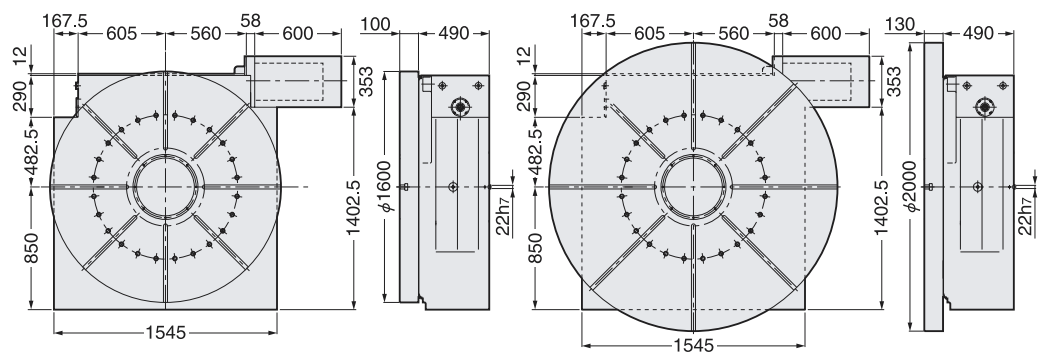
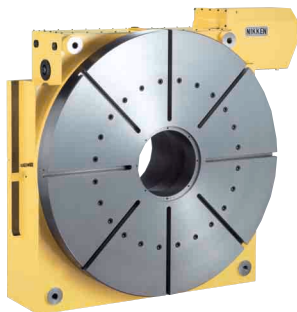


★ Please contact us about the back support for vertical use.



Indexing of the turbine shaft

CNC1600, 2000 **NEW**

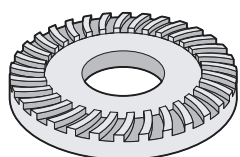
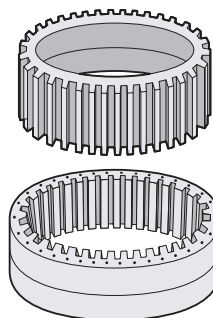


★ Please contact us about the back support for vertical use.

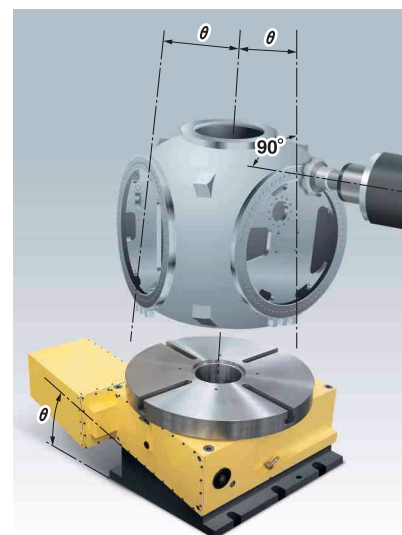
★ For accuracy standard, refer to P.51, 52.

Application of the Large Rotary Table

Machining of the gears with large module



Hobbing of the gears with large module



Configuration of the large rotary table on the horizontal M/C to machine a propeller hub of the windmill.