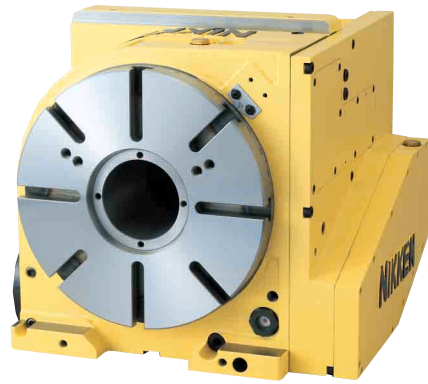
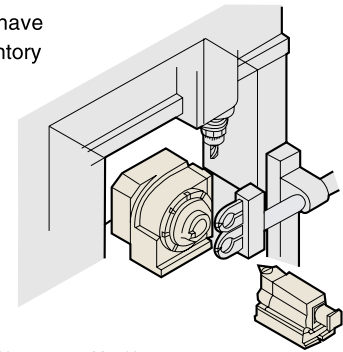


BACK SIDE MOTOR MOUNTED CNC ROTARY TABLE



CNC260B

- Suitable for the machine which does not have so wide space for Y axis, such as the gantry type M/C or the M/C with splash guard.



- Explanation of the Code No. (Example)

CNC 260 B F A - M

- No Letter: without motor M: with motor
- No Letter: DC servo motor A: AC servo motor
- Motor Maker
- A21: with NIKKEN α 21 controller
- F:FANUC M:MELDAS Y:YASNAC OSP:OSP T:TOSNUC N:NEC
- S:SANYO Z:SIEMENS I:INDRAMAT H:HEIDENHAIN X:ISOFLEX
- SEM:SEM B:BOSCH
- Position of motor B: Back side
- Diameter of Table
- 180, 200, 260, 300, 320, 400
- CNC: Standard
- CNCZ: High Speed Z Series

Specifications

() : High Speed CNC ROTARY Table Z series

Item / Code No.		CNC180B CNCZ180B	CNC202B CNCZ202B	CNC260B CNCZ260B	CNC302B CNCZ302B	CNC321B CNCZ321B	CNC401B CNCZ401B
Diameter of Table	ϕ mm	180	200	260	300	320	400
Diameter of Spindle Hole	ϕ mm	$\phi 60H7, \phi 40$	$\phi 60H7, \phi 40$	$\phi 80H7$	$\phi 80H7$	$\phi 105H7$	$\phi 105H7$
Centre Height	mm	180	180	170	170	230	230
Width of T Slot	mm	$12^{+0.018}_0$	$12^{+0.018}_0$	$12^{+0.018}_0$	$12^{+0.018}_0$	$12^{+0.018}_0$	$14^{+0.018}_0$
Clamping System		Air	Air	Air/Hyd.	Air/Hyd.	Hyd.	Hyd.
Clamping Torque	N·m	303	303	588/1568	588/1568	1760	1760
Table Inertia at Motor Shaft ($\frac{GD^2}{4}$) kg·m ² ×10 ⁻³		0.4	0.4	1.7	1.8	7.0	7.0
Servo Motor	min ⁻¹	α iF2/5000·2000	α iF4/4000·2000	α iF4/4000·2000	α iF4/4000·2000	α iF12/3000·2000	α iF12/3000·2000
MIN. Increment		0.001°	0.001°	0.001°	0.001°	0.001°	0.001°
Rotation Speed	min ⁻¹	22.2 (44.4)	22.2 (44.4)	16.6 (33.3)	16.6 (33.3)	22.2 (44.4)	22.2 (44.4)
Total Reduction Ratio		1/90 (1/45)	1/90 (1/45)	1/120 (1/60)	1/120 (1/60)	1/90 (1/45)	1/90 (1/45)
Indexing Accuracy	sec	± 20	± 20	20	20	15	15
Net Weight	kg	56	60	145	150	240	270
MAX. Work Load on the Table	Vertical kg	100	100	175	175	250	250
	Horizontal kg	—	—	—	—	—	—
MAX. Thrust Load applicable on the Table	N	10780	10780	25480	25480	31360	31360
	F×L N·m	415	415	984	984	1166	1166
	F×L N·m	980	980	3332	3332	3920	3920
MAX. Work Inertia	Vertical + ($\frac{GD^2}{4}$) kg·m ²	0.4 (0.2)	0.4 (0.2)	3.2 (1.6)	3.2 (1.6)	6.4 (3.2)	6.4 (3.2)
Driving Torque	N·m	72 (54)	72 (54)	192 (153)	192 (153)	432 (345)	432 (345)

★ α iF4/4000 motor can be mounted on **CNC180B & 202B.**

★ α iF8/3000 motor can be mounted on **CNC260B & 302B.**

★ Please contact with us for ultra precision type and rotary joint type

★ The supplied hydraulic pressure is 3.5MPa for hydraulic clamping system.

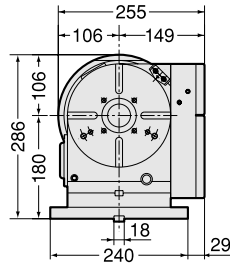
★ Please refer **P.55** for the air-hydraulic booster, when the rotary table with hydraulic clamping system is used on the M/C without hydraulic source.

CNC180B, 202B, 260B, 302B, 321B, 401B

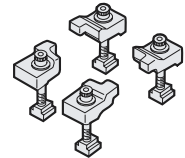
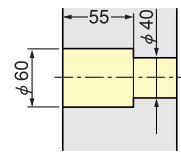
NIKKEN

External dimensions will be different according to the type of the servo motors. Dimensions with FANUC motor are shown. Please contact with us for CAD data (2D:DXF, 3D:PARASOLID).

CNC180B, CNCZ180B

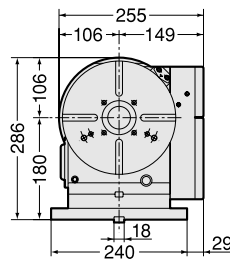


Powerful Brake
Brake Torque : 303Nm

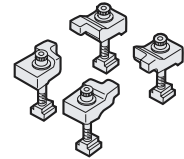
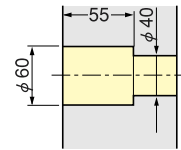


Air purge function is provided.

CNC202B, CNCZ202B



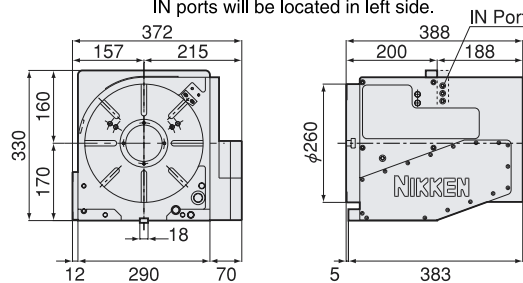
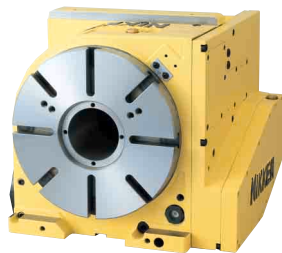
Powerful Brake
Brake Torque : 303Nm



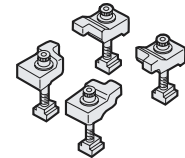
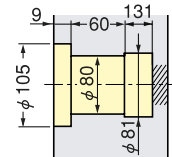
Air purge function is provided.

CNC260B, CNCZ260B

★ MAX.8 ports of rotary joint can be mounted without changing dimension.
IN ports will be located in left side.



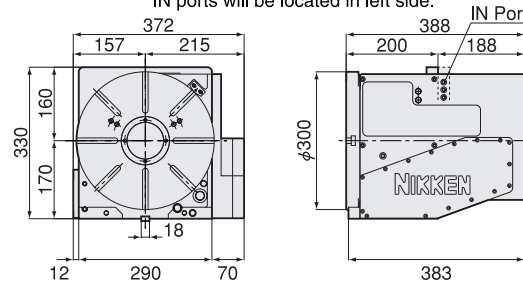
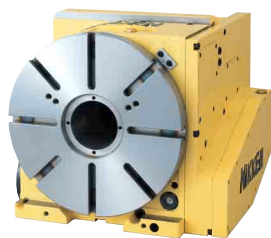
Pneumatic Brake Torque UP
588Nm



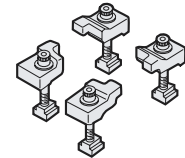
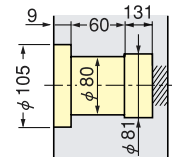
For the rotary table with pneumatic brake, air purge function is provided inside the motor cover as standard.

CNC302B, CNCZ302B

★ MAX.8 ports of rotary joint can be mounted without changing dimension.
IN ports will be located in left side.



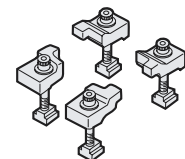
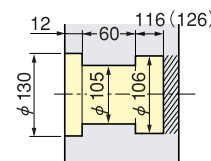
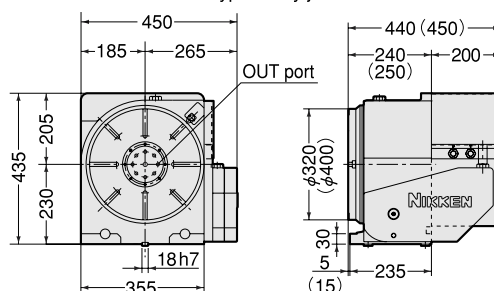
Pneumatic Brake Torque UP
588Nm



For the rotary table with pneumatic brake, air purge function is provided inside the motor cover as standard.

CNC321B, CNCZ321B CNC401B, CNCZ401B

★ Built-in type rotary joint can be mounted on CNC321B & 401B



IN ports are located in left side.
() : CNC401B

Photo shows with centre socket (option).