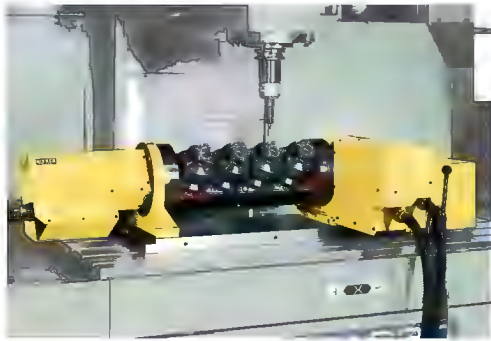
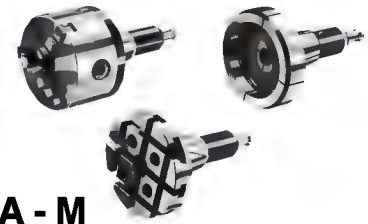


MULTI-SPINDLE TILTING ROTARY TABLE

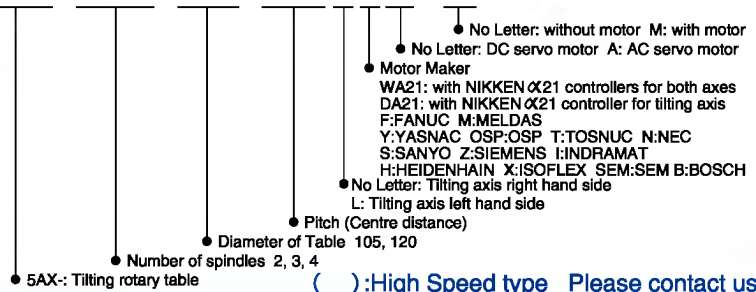
NIKKEN


5AX-4MT-120

- Tilting rotary table with Multi-Spindle
- Various attachment for fixing work piece



- Explanation of the Code No. (Example)

5AX-2MT-105-120 FA-M


Specifications

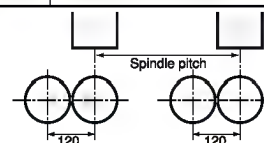
| Item / Code No. | | 5AX-2MT-105 | | 5AX-4MT-120 | |
|--|---|--|-------------------|--|-----------------------|
| Diameter of Table | φmm | 105 | | 105 | |
| Diameter of Spindle Hole | φmm | φ60 _{H7} φ30 | | φ60 _{H7} φ30 | |
| Number of spindles (Pitch) | mm | 120 | | 120 | |
| Centre Height (90°) | mm | 175 | | 235 | |
| Table Height in Horizontal Position (0°) | mm | 250 | | 300 | |
| Width of T Slot | mm | 16 ^{+0.018} ₀ | | 16 ^{+0.018} ₀ | |
| Axis | | Rotary | Tilting (0°~105°) | Rotary | Tilting (-110°~+110°) |
| Clamping System | Air 0.5MPa Hyd. 3.5MPa | Air | Air | Hyd. | Hyd. |
| Clamping Torque | N·m | 147 | 147 | 147 | 343 |
| Table Inertia at Motor Shaft | $\frac{GD^2}{4}$ kg·m ² ×10 ⁻³ | 0.13 | 0.13 | 0.2 | 0.48 |
| Servo Motor | min ⁻¹ | αiF2 / 5000·2000 | αiF2 / 5000·2000 | αiF8 / 3000·2000 | αiF4 / 4000·2000 |
| MIN. Increment | | 0.001° | 0.001° | 0.001° | 0.001° |
| Rotation Speed | min ⁻¹ | 22.2 | 11.1 | 11.1 (44.4) | 16.6 |
| Total Reduction Ratio | | 1/90 | 1/180 | 1/180 (1/45) | 1/120 |
| Indexing Accuracy | sec | ±30 | 60 | ±45 | ±30 |
| Net Weight | kg | 150 | | 350 | |
| MAX. Work Load on the Table | 0° to 30° kg | 15 | | 25 | |
| | 30° to 90° kg | 10 | | 15 | |
| MAX. Thrust Load applicable on the Table | Tilting Angle = 0° N | 3920 | | 3920 | |
| | Tilting Angle = 0° L=60mm F ₁ =784N | L=60mm F ₁ =784N | | L=60mm F=2858N | |
| | Tilting Angle = 90° L ₁ =0mm F ₁ =653N L ₂ =100mm F ₂ =490N | L ₁ =0mm F ₁ =653N L ₂ =100mm F ₂ =490N | | L ₁ =0mm F ₁ =1380N L ₂ =100mm F ₂ =1040N | |
| | Tilting Angle = 90° F×L N·m | 49 | | 49 | |
| MAX. Work Inertia | $\frac{GD^2}{4}$ kg·m ² | 0.014 | | 0.021 | |
| Driving Torque | N·m | 36 | | 144 | |

★ Min. pitch between spindles 105:120mm. If you need different pitch, please contact with us.

★ 4 spindle rotary table to suit 2 Spindle M/C is also available, please contact with us.

★ Max numbers of spindles 105:4 spindles.

★ The supplied hydraulic pressure is 3.5MPa for hydraulic clamping system.

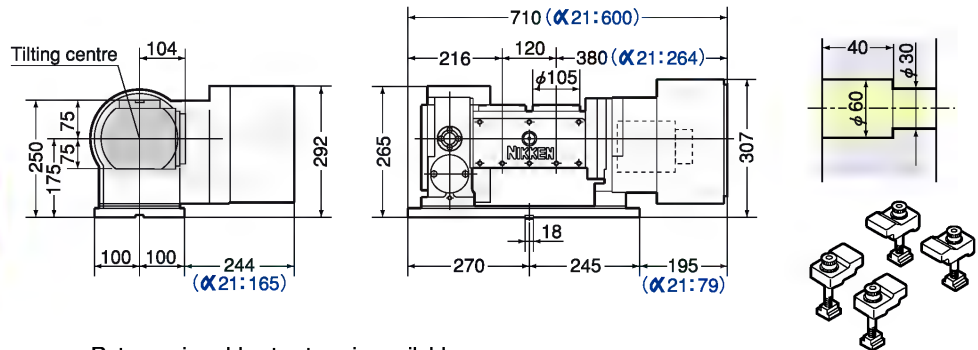


5AX-2MT, 5AX-4MT

NIKKEN

External dimensions will be different according to the type of the servo motors. Dimensions with FANUC motor or with NIKKEN α 21 controller (α 21:) are shown. Please contact with us for CAD data (2D:DXF, 3D:PARASOLID).

5AX-2MT-105



Rotary axis cable stay type is available.
Centre height of high column table is 35mm higher than that of standard table.
MAX. number of ports in rotary joint Standard: 4 ports, High Column: 6 ports

5AX-4MT-120

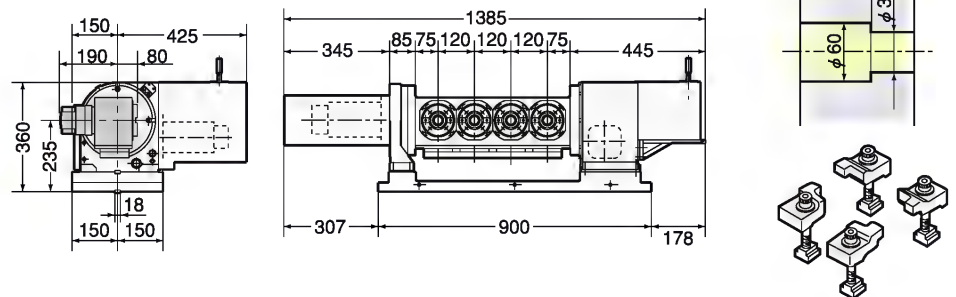
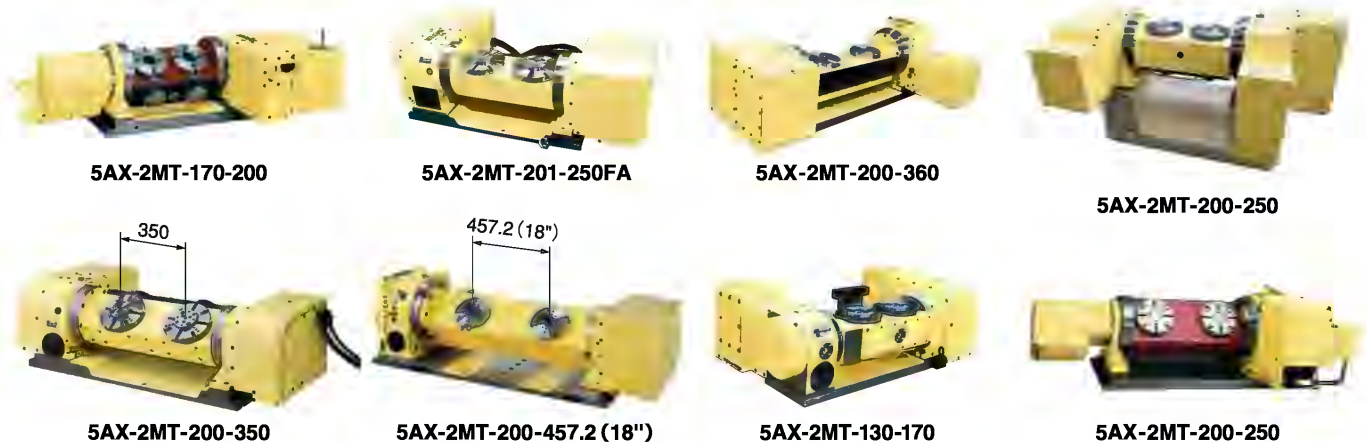


Photo shows with 4" power chuck (option).

MAX. 6 ports can be used in the rotary joint for standard model.

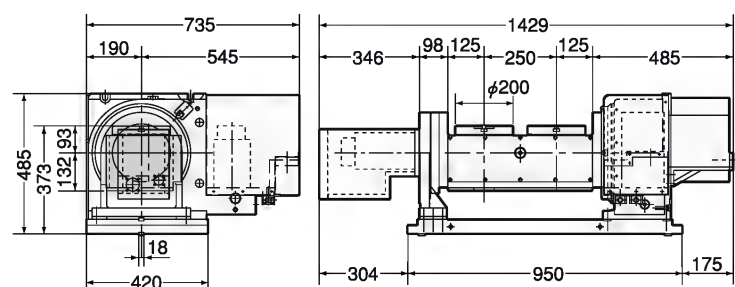
Multi-Spindle Tilting Rotary Table

For Multi-Spindle Tilting Rotary Table, please contact us with the required faceplate diameters, fixture attachment (e.g. Power Chuck etc), the required spindle pitch, the M/C model and the type of NC.



Accuracy Standard of Multi-Spindle

| No. | Measuring Item | Measuring Method | Accuracy |
|-----|--------------------------|------------------|---|
| 1 | Pitch between Spindles | | Within ± 0.02 mm from nominal pitch |
| 2 | Centre Height of Spindle | | Within ± 0.02 mm |



5AX-2MT-200-250